



# *The Buzz*

*Newsletter of the Iowa Honey Producers Association*



December 2011

**Upcoming Beekeeping Classes Pg.2**  
**The Beeyard Report Pg.4**  
**Featured Beekeeper of the Month Pg.7**







## January 1st, 2012 Happy New Year! The 100th Anniversary of the IHPA!

Put on your thinking cap and be sure to let the IHPA board members know what great ideas you have for celebrating the 100th Anniversary of the IHPA. This is a unique opportunity to promote beekeeping and the IHPA throughout 2012 and during the Iowa State Fair. Let us know what you think!



### BEGINNER BEEKEEPING COURSES SCHEDULED

The Iowa Honey Producers Association (IHPA) and several other beekeeping groups will conduct beekeeping courses in several locations across the state to help those interested in beekeeping get started. For 2012, course locations and details are listed as follows:

**Winterset Library** – Classes to begin in March. Pat Randol, Instructor. Contact Pat at 515-210-7445 or pdrandol@gmail.com for details.

**Ankeny, Iowa Lab Facility** – Classes begin Thursday, January 19th and will meet for seven consecutive Thursdays, 6:00 – 8:00 PM. Instructors: John Johnson & Andy Joseph. To enroll, contact Andy at 515-725-1481 or Andrew.joseph@iowaagriculture.gov. Course fee is \$30.

**Chariton** -- Classes to begin January 20th at the Lucas County Extension Office. Meetings will begin at 6:30PM for seven consecutive Fridays. Instructor: Craig Greene. Contact Craig at 641-842-2112 for details.

**Marshalltown** – Classes held at Iowa Valley Jan 18 through Feb 29. This course will be divided into two parts: The first four weeks will be Beginning Beekeeping (Beekeeping I). The final three weeks will be "Advanced Beekeeping" (Beekeeping II), dealing with the 2nd year and beyond. Course fees = \$40 for enrollment in both sections, or \$25 for those who only want to take one part. Requirements for Beekeeping II are Beekeeping I or one year of beekeeping experience. Contact Sandy Supianoski at Iowa Valley to enroll: 800-284-4823. Instructors: Phil Ebert and Margaret Hala.

**Washington, Kirkwood Center** -- Classes to begin February 6th and will meet for four consecutive Mondays, 6:00 – 8:00. Instructor: Ron Wehr. Contact Ron at 319-698-7542.

**Spencer** – Classes to begin in March. Contact Larry or Marlene Boernsen at 712-735-4205 for details.

**Mason City** – Classes held at NIACC, four consecutive Saturdays beginning February 4th. Course fee = \$39.00. Instructors: Pat & Peggy Ennis. To register, contact NIACC Continuing Ed at 641-

422-4358 or at 888-GONIACC ext. 4358.

**Knoxville** -- Classes to begin January 17th at the Marion County Extension Office. Meetings will begin at 6:30PM for seven consecutive Tuesdays. Cost is \$30.00. Instructor: Craig Greene. Contact Craig at 641-842-2112 for details.

**Oskaloosa** -- Classes to begin January 19th at the Mahaska County Extension Office. Meetings will begin at 6:30PM for seven consecutive Thursdays. Cost is \$30.00. Instructor: Craig Greene. Contact Craig at 641-842-2112 for details.

**Indianola Library** – Classes to begin January 19<sup>th</sup>, 6PM – 8PM, and continue for 8 consecutive Thursdays. Meetings held at the Trinity-United Presbyterian Church (Hwy 92, across from the A&W). Instructors: Friendly Beekeepers of Iowa. Contact Mike Wyatt at 515-961-0357 for details.

**Indian Creek Nature Center** – Classes to begin Thursday, January 19<sup>th</sup> at the nature center. Course meets for eight sessions throughout the year. Instructor: Bob Wolfe. Series Fee: \$55/Member \$85/Nonmember \$10/partner. For details and registration, view the website: <http://www.indiancreeknaturecenter.org/basic-beekeeping?month=jan&yr=2012> or call 319-363-0664.

**Glenwood** – Classes to begin January 25th, 6PM to 8PM, meeting 4-6 consecutive Wednesday evenings. Course held at the Mills County Engineer's Office. Instructor: Clarence Seale. Contact Clarence for details and registry at 712-310-7410.

**Peosta** -- Classes held at Northeast Iowa Community College. Classes to begin January 24<sup>th</sup>, 6:00PM – 9:00PM, meeting for 6 consecutive Tuesdays. Instructors: Louise and Bill Johnston. Contact NICC Continuing Ed for details & registration at [www.nicc.edu](http://www.nicc.edu) (click on continuing education), or by phone at 563-557-0354.

Early enrollment for many of these courses is important so courses can meet minimum enrollment numbers. Fees will vary by location and are expected to range from \$30 to \$60. For more information, please refer to the IHPA website and online monthly newsletter at [www.abuzzaboutbees.com](http://www.abuzzaboutbees.com) or contact Andrew Joseph, State Apiarist, Iowa Department of Agriculture & Land Stewardship at (515) 725-1481 or [andrew.joseph@iowaagriculture.gov](mailto:andrew.joseph@iowaagriculture.gov).

### The Buzz Newsletter Article Submissions and IHPA Memberships

Please send submissions, classified ads, and photos to Alex W. Ebert by email to [TheBuzz@ABuzzAboutBees.com](mailto:TheBuzz@ABuzzAboutBees.com) or by mail to The Buzz, c/o Phil Ebert, 14808 S. 102<sup>nd</sup> Ave. E., Lynnville, IA 50153. **The deadline for submissions is the 15<sup>th</sup> of each month to be included in the following month's newsletter.** The Buzz is a monthly newsletter published by the Iowa Honey Producers Association which is an affiliate of the Iowa State Horticultural Society. IHPA Membership is only \$10 annually. To join IHPA and receive your complimentary member subscription to The Buzz Newsletter, please contact Melanie Bower, IHPA Treasurer, 207 S.E. Diehl, Des Moines, IA 50315, Phone: (515) 287-6542

## Greetings from the President

The 2011 season is officially over now. For me, when the last pallet gets loaded and the load netted and strapped and finally, the phone call to let me know the bees have made the 1900 mile trip to California and passed successfully through the CA border inspections and are on the ground, that is when I consider the year officially over. The last load left the 2<sup>nd</sup> week of December and now I get to take a deep breath and relax for a few days and then start thinking about the next year. My bees have held their strength very well this year and approximately 85% of the colonies that were going in June actually were sent to California. From everything I have been hearing, Nationwide, the bee health generally seems to be fairly good this year. That fact seems to be kind of out of the ordinary given the fact that the overall U.S. honey crop is one of the worst ever. Normally it is expected with poor honey production, poor bee health will follow because the bees are unable to thrive because of whatever conditions cause the poor honey production, normally poor honey production is caused by poor weather, too hot, too cold, or too dry. The list goes on and on for the reasons why a beekeeper might see poor honey production but if bees are unable to forage properly, they normally FAIL TO THRIVE. I highlighted that term because it is a phrase I use a lot and will probably use a lot. I feel the phrase is very descriptive of a problem I have seen in the past and it comes to mind as I hear others describe what is going on in their bee-hives. I still see hives that FAIL TO THRIVE (FTT) but it can usually be blamed on a specific and recognizable cause. High Varroa Mite levels, an injured or poorly mated queen, or some other reason that is recognized by an experienced beekeeper. A beekeeper with numerous hives in one location is better able to gauge colony strength abnormalities because if all the colonies are doing poorly, then it is likely that Mother Nature is just not cooperating. That is kind of the point I was trying to get to. I think that many

commercial beekeepers are supplementing their bees through poor foraging conditions in the spring and keeping the supplement going right up until honey supers are put on. I can tell you for sure that supplemental feeding continues to be a huge expense but I sincerely feel it is the reason for better colony strength and payoff in the end. From last January until December I have fed an average of 100 pounds of corn syrup and 6 pounds of protein supplement per hive. Yes, 100 pounds of corn syrup per hive per year! No, I'm not feeding corn syrup to the colonies with honey supers on. Those figures surprise me because I knew I was buying a lot of corn syrup, but I had never figured out an average per hive. Wow! I've convinced myself—if a hive of bees can't thrive after 100 pounds of corn syrup and 6 pounds of protein supplement, then we've got problems! We have had a very mild December and hopefully that trend will continue for the rest of the winter. I had one hive left that didn't go to California so I will be able to see if I can keep a hive alive through an Iowa winter. Hopefully everybody had plenty of time to prepare their hives for winter. Because of the mild fall we had plenty of time to get feed in the hives and get them protected from the wind.

Hopefully I can focus a little more time on IHPA business now so I can be prepared and get a lot accomplished at the current boards first meeting toward the end of January. I hope to have all of the committee chair people named and contacted before then because its 2012 already and there is no time to waste. If you would like to participate or if you have any ideas or questions I am happy to point you towards the appropriate chair person or try to answer your questions. I would like to thank the outgoing board members; John Johnson, Larry Boerensen, and Jack Trowbridge for their services. I really hate to see familiar faces of people who have provided good support and leadership rotate off the board, but along with that, it is good to see new faces step in to provide new ideas and

new perspectives. Live Happy, Work Hard, and Enjoy your bees!

Curt Bronnenberg

## **2012 IHPA Membership and The Buzz**

The Iowa Honey Producers Association will be publishing a 100<sup>th</sup> anniversary membership directory in February 2012. Dues are still \$10 for the primary member and \$5 for each additional family member at the same address. To ensure that your name is included in this issue of the directory, please send your dues to: IHPA, Melanie Bower, 207 S.E. Diehl, Des Moines, Iowa 50315-5227.

Melanie Bower  
Treasurer

**FOR SALE:** 2 or 3 pound packages of Italian bees with queen. Picked up in Cedar Rapids or Aurora, Iowa in mid-April. Bees from Hill-Ward Apiary in California.

All orders must be received by February 28. Contact Douglas Child 319-634-3682.

2/12

**FOR SALE:** Package bees We will have 2#, 3# and 4# pkgs with your choice of Carniolan or Italian queens. The 4# can come with either one or two queens. Available in April. Check our web site for dates and current pricing. [www.eberthoney.com](http://www.eberthoney.com) Call 641-527-2639 or e-mail [ehoney37@netins.net](mailto:ehoney37@netins.net)



## The Central Iowa Beekeepers Association

The Central Iowa Beekeepers Association will hold a winter seminar, **Saturday, January 14** at Bonanza Family Steakhouse, 5029 NE14St, and Des Moines, IA

We are inviting all beekeepers to attend this timely seminar. You may join us for lunch from 12: pm with the seminar beginning at 1:30pm Our featured speaker will be **Gary Reuter** from the University of Minn. Gary will be presenting information on research work he and Dr. Marla Spivak are involved in at the U of MN. We will have plenty of time for questions after Gary's presentation.

Please join us for a great time of information, fellowship and good food.

### THE BEEYARD REPORT

It's November 15 and the temp is sixty degrees. The bees are flying. Any flying time in November really shortens the winter for the bees. It gives them a chance to dump their load. That lowers their stress level.

The bees look good. Most of the time, when we make our last round of feeding in the fall, we see some colonies starting to fail. The indication of this is lots of dead bees in the division board feeders.

We haven't seen that this year so I am hopeful. We have picked up a few colonies but not a significant number. The rest look good. Even in good years we have a 25% death loss. I consider that manageable. Years ago, a 10% loss was considered horrendous.

For us, a 25% loss represents 175 colonies. That would leave us with 515 colonies. If 300 of those are splitable, we have will have bees for sale or to make increase. I'm not sure what our loss was last winter. As I have stated earlier, I quit counting after it hit 35%. The mite load got away from us in October. I knew losses would be bad. We were more vigilant this year. When you check your mite load, bear in mind

that if you have a 3% load in late August, it may be 10% to 12% two weeks down the line and 20% to 30% two weeks after that. If it gets that high, "Katy bar the door". We were still able to make up our death loss with splits. I did keep 25 pkgs but I split those and sold them as nucs.

I hate to say how many times the mites have whipped me. Several times we have moved through the fall thinking we were going to get by without a mite treatment only to have the load explode right at the end of the year. Now, if we see a 3% to 5% load we are going to treat. The mite population doesn't develop at the same rate every year. The only way to know what you have is to test. Are there resistant bees? Maybe. Even if you have bees that show some resistance, you need to incorporate this with some sort of IPM strategy. I don't believe there are any bees that can get by without some sort of help controlling mites. Sometimes people tell me they have bees that chew the legs off the mites. That may be but I don't know how they can tell without a magnifying glass. I have to look closely just to see any legs at all let alone if any of them are gone.

Now that all the bees are in bed for the winter, it's time to think about winter activities. I did my first sampling demo. I didn't have very high expectations but it proved to be fun. I sold some honey and had some fun people next to me that made the time go quickly. Our Marshalltown class is set up. It is split into two parts. The first four weeks are beginning beekeeping. The last three are "advanced beekeeping"

or year two and onward. People can take either part or both. Class starts Jan 18. We have a mountain of boxes to repair or burn. A lot of them fall into the "not good enough to use but too good to burn"

category. Often times in the spring, I will start nucs in the bad boxes.

Not all of these get sold. The bees develop and they are still in the bum boxes as we prepare for winter. This

always proves to be a point of irritation for me.

I always look forward to winter. It takes longer to get anything done but it provides mental down time. I make out a list of things to do but not all of it will happen. Happy Holidays to all!!!

Submitted by Phil Ebert

### The Iowa Primary...

NOVEMBER 7, 2011 · KIM FLOTTUM

I just attended the 99th Annual meeting of the Iowa Honey Producer's Association. They meet in Marshalltown every year at a motel large enough to handle the 150+ people attending. The Association has about 400 members state wide so 40% of their members attending was outstanding.

Though not nearly as contentious, dramatic, or as well covered by the media as the more politically charged primary elections going on at the moment... especially in Iowa... the results of the annual elections held at the meeting are no less significant to the beekeepers there. With only a single candidate for both president and vice president, who were both incumbents, the results were predictable and overwhelming. Both are commercial beekeepers...two of the few left in that state...and they are dedicated, passionate, and good at what they do. Like many groups the VP is the program and meeting chair, getting things organized and finding speakers. He does, by the way, work with a very engaged and dedicated wife...which is a Godsend to most of us guys. Meanwhile, the president sort of oversees the whole, and is the point man (or woman) for bigger pictures. The president doesn't get as involved in the meeting plans, but there's input and opinion all around. And besides, there's other folks to take care of the details.

Roberts, of course, was in the room, but pretty much nobody paid close attention. There were motions and seconds and campaign speeches and secret ballots, kind of. And it was, as it was supposed to be, a lot of fun.

The contest for treasurer was interest-





**Pat Ennis, the Vice President, did a great job of getting the meeting organized and all the details lined up. Of course he had a lot of good help, starting at home.**

ing. The current treasurer has steered the IHP through a complete revamp of their bookkeeping, obtaining the Generally Accepted Accounting Procedures (GAAP) title, obtaining for the group a 501(3)(C) status, bringing in outside investment analysis...doing it right it seems, with qualifications to die for. But Lo, there was another candidate...a banker who was a former treasurer for several groups running in the thousands of members...qualifications it seems, also to die for. They both gave a campaign speech outlining their accomplishments and attributes. The incumbent won, but I heard it was close. But what a backup to have!

Iowa beekeepers divide their state into six geographical districts, each with a board representative that is elected annually. This year several of those districts had more than one candidate who wanted to be on the board. Really. And each of those candidates gave a campaign speech...really. They came from families long in the business and the association, newbies who wanted to get involved, old timers who had been around but finally were interested, and some in between ... what a trip! I haven't been to a beekeeper's meeting that had the enthusiasm, involvement or drive like this group in a long time – maybe the Essex group in Massachu-

setts, or the Backyarders in Connecticut... but what a breath of fresh Midwest air.

Like some state groups the IHP have a strong presence at their state fair, selling enough honey lemonade to float a battleship, and enough honey at their booth to pay down the national debt. Of course they sell honey sticks, too, but only clover honey sticks...none of that flavored stuff for these purists. The income from all this allows them to accomplish a lot of things otherwise

not possible for most groups. But still, sometimes volunteers are scarce...even in the best of groups it seems bodies can sometimes be hard to find.

One of the things they get to do to show they have their heads on straight is that they voted to send their State Apiary Inspector to the AIA meeting in Beltsville this winter...because the State Dept of Ag won't. How's that for common sense? But for a dose of 'just like everybody else', they spent just 10 minutes debating to spend the \$2000.00 needed to send him there, but later, they took the better part of an hour to raise the dues from \$15.00 to \$20.00 a year. Sound familiar?

My hat's off to this group. They do a good job and I hope the members appreciate the work involved to make all this happen...the fair, the meetings, the historian, the vendors, the Honey Queen program, the legislative work... all of it, and probably a lot that I missed.

Your group could learn a lot from them. I did.

Thanks Iowa, for setting a great example, a good time, and a lot of fun.

<http://blog.beeculture.com/?p=80>



**Gerry Hayes, Apiary Inspector from Florida was one of the speakers at the meeting. There was a native pollinator from Iowa State University, an award winning mead maker and myself on the agenda for the two day meeting.**

## Preparing Colonies For Winter.

Glen Stanley

It has been an ideal Fall for getting colonies prepared and adjusted for Winter. Several days were perfect for feeding colonies that needed some extra stores. Some needed a lot of feeding if they are going to even survive.

Colonies that finally had sufficient stores and combs of brood the first of October will do just fine..Those that had neither a good supply of honey and brood will Likely be Winter casualties.

Next Spring will tell the story of whether beekeepers in general gave their colonies full attention and did the proper thing for the benefit of each colony. It has been proven once again that even in Iowa, colonies prepared properly not just merely survive but at least 95 percent will be in good , to excellent condition come April.

Good Luck!

## THE WEATHER & BEEKEEPING

By Glen Stanley,  
State Apiarist Emeritus.

So far this late Fall and early Winter the weather has given honey bee colonies a break, with a few hours of favorable temperatures for short flights. That is sufficient for cleansing and carrying out the bees that have died of old age. If bees are confined to the hives for as long as five to six weeks they are in trouble and generally develop dysentery. That is also accompanied by the spread of Nosema disease.

Other than that IF colonies were treated for mites when it was determined necessary and with an adequate supply of honey and with all other

Winter preparations all should win-

ter well.

Making a decision about the amount of honey each colony has by late October can be a problem. This is not a time for GUESS WORK. One can come close by actually counting full combs of honey and if there is the equivalent of the upper chamber completely full that is likely enough. It is possible that some colonies will have too much honey in Late October but such cases are unusual. Ending up with the upper chamber full of honey is good BUT not the way to put the colony into winter. A last operation should be to bring three combs of open cells from the lower chamber and put three combs of the honey in the lower chamber. The

### WEAVER'S *famous* QUEENS and *Package Bees*

★ Buckfast

★ All-American

Order On-Line Now

Visit us on the Web at [www.rweaver.com](http://www.rweaver.com)

**THE R WEAVER APIARIES, INC.**

16495 CR 319, Navasota, TX 77868

Ph: 936/825-2333 [rweaver@rweaver.com](mailto:rweaver@rweaver.com)

quickest and surest way to know about actual honey stores is by using a scale, which can be designed , used and save a lot of time. The only way to possibly miss is IF some colonies have an excessive amount of pollen. I can count on one hand the number of beekeepers that have convinced themselves that weighing is the way to go.

As years go by you will know just how much each colony should weigh with two brood chambers bottom and inner cover. In central Iowa we determined that each should weigh 115 to 120 pounds.

By weighing each side and adding the total you will have the actual weigh by a pound or two.

REASON: Bees prefer to cluster on

combs with open cells, so they will move up into the upper chamber all the way to the inner cover with Styrofoam fitted in the rim of the inner cover. Being up there where it the warm part of the hive the bees may start brood rearing as early as February because that is the warm part of the hive. Those young bees will be the start of the development of excellent colonies come April. April 1st will tell the story. Good luck.

Glen Stanley  
2615 Aspen Road # 1  
Ames, Iowa 50014

## THE 2012 100<sup>TH</sup> ANNIVERSARY YEAR OF THE IHPA

I think it would be nice to have a Beekeeping Question and Answer section in the Buzz, so if you would like to submit a Question please e-mail to [cbronny823@aol.com](mailto:cbronny823@aol.com) and use the Subject line Buzz Question and Answer. It will help me with ideas for subjects to write about for my Presidents Column.

Thank You.  
Have Fun, Work Hard,  
and Bee Involved.

Curt Bronnenberg

## New IHPA Cookbook!

The cookbook is becoming a reality! I have received several recipes from members, so keep them coming. We will be accepting recipes until the end of January. Ideally this is a "slower" time for beekeepers, so we decided to extend our deadline to accommodate everyone having time to gather them, print them out and send them to us. The recipe form is on the website [ [www.abuzzaboutbees.com](http://www.abuzzaboutbees.com) ] for your convenience. Please submit lots of recipes so we will have the best cookbook ever to celebrate the 100<sup>th</sup> Anniversary of the Iowa Honey Producers Association. Send recipes to Donna Brahms, Peggy Ennis, Julie Swett, Regina Hoy, Louise Johnson or Deb Nielson.



## Featured Beekeeper of the Month

This month our featured beekeeper is one of our participants in the mentor program, Elizabeth Pautsch. She lives with her parents, Kurt and Amy and three younger sisters at Galva, Iowa. Her father is a trucker and her mother is the home-school teacher at their house. Elizabeth is a sophomore in high school and an active member of The Pilgrims of the Holy Family. She helps with Vacation Bible School and the Summer Theatre Camp. Some of her interests are caring for her bottle calves, journaling, writing poetry, cooking and reading.

Elizabeth found out about the Iowa Honey Producers Association's mentor program when Shiliah Spaulding was the Iowa Honey Queen and gave a presentation to their home-school group. Elizabeth became excited about beekeeping. She read the books, *Beekeeping for Dummies* and *Backyard Beekeeping* at least two times each. She also learned many useful techniques from her mentor Cecelia Patterson who Elizabeth says is "awesome help". Elizabeth says, "I've had nothing but good experiences with my bees. They are super gentle and have done really well considering the odds". She also says her queen bee died during aerial spraying season and she thought her hive was kind of isolated from other hives. She didn't think it would be possible for any new queens to get mated. She was pleasantly surprised after a whole month to find a new queen and a half comb of brood while inspecting her hive with her mentor. Cecelia had visited to see if there was a way to save the hive. Elizabeth was very happy and relieved.



Submitted by Ron Wehr



**In the future Elizabeth plans to continue beekeeping as a hobby for as long as she is able. Thanks for your story and good luck next year with your bees.**

## WINTER SQUASH WITH APPLES

Printed from COOKS.COM

2 winter squash, halved and seeded  
Boiling water  
3 tart apples (Granny Smith), peeled, cored, and diced  
1/4 c. raisins (optional)  
1/4 c. plus several spoonfuls melted butter  
1/3 c. maple syrup or honey  
Salt to taste

Set squash half, cut side down, in a shallow oven-proof dish and pour in 1/2 inch of boiling water. Bake, uncov-

ered, in 400 degree oven for 20 minutes.

In meantime: Mix apples and raisins with 1/4 cup of butter and syrup or honey.

Turn squash right side up. Break surface with a few spoonfuls of butter. Sprinkle lightly with salt and fill centers with apple-honey mixture.

Cover the pan with foil; return to oven and bake 30 minutes more or until apples and squash are tender. Serves 4.



## Iowa Honey Producers Association Financial Report for 2011

I would like to thank Mary Ebert, Margaret Shada, and Louise Johnson for their help with the merchandise table at the Annual Meeting of the Iowa Honey Producers Association on November 4 and 5, 2011 at the Best Western Regency Inn in Marshalltown, IA. The following information is the financial report for the fiscal year 2011.

### IOWA HONEY PRODUCERS ASSOCIATION BALANCE SHEET YEAR ENDED SEPTEMBER 30, 2011

<b>ASSETS</b>			
<b>Current Assets</b>			
Cash-Checking		\$25,123.00	
Savings-Wells Fargo		\$31,726.00	
Savings-Comm. Choice CU		\$ 25.00	
WF Savings- Bickle Award		\$ 1,000.00	
Savings CD-Comm. Choice CU		\$10,196.00	
Accounts Receivable		\$ 4,563.00	
Inventory		\$ 1,398.00	
Total Current Assets			<u>\$74,031.00</u>
<b>LIABILITIES AND CAPITAL</b>			
<b>Current Liabilities</b>			
Accounts Payable		\$ 804.00	
Sales Tax Payable		\$ 593.00	
Pre-Paid dues		\$1,106.00	
Total Current Liabilities			<u>\$ 2,503.00</u>
<b>Capital</b>			
Retained Earnings-General		\$70,528.00	
Retained Earnings-Bickle Award		\$ 1,000.00	
Total Capital			<u>\$71,528.00</u>
Total Liabilities & Capital			<u>\$74,031.00</u>

### IOWA HONEY PRODUCERS ASSOCIATION INCOME STATEMENT YEAR ENDED SEPTEMBER 30, 2011

<b>Sales</b>	<b>10-1-10 thru 9-30-11</b>		<b>10-1-09 thru 9-30-10</b>	
Sales Taxable	\$10,323.00		\$ 8,694.00	
Sales-Non Tax	\$62,378.00	\$ 72,701.00	\$58,836.00	\$ 67,530.00
Cost of Goods Sold		<u>\$(31,031.00)</u>		<u>\$(28,043.00)</u>
Gross Profit-Sales		\$ 41,670.00		\$ 39,487.00
<b>Revenue</b>				
Membership Dues	\$ 3,690.00		\$ 3,696.00	
Annual Meeting	\$ 6,254.00		\$ 6,913.00	
Queen Income	\$ 94.00		\$ -	
Misc. Income	\$ 4,946.00		\$ 7,734.00	
Total Revenues		<u>\$ 14,984.00</u>		<u>\$ 18,343.00</u>
Gross Profit		\$ 56,654.00		\$ 57,830.00
<b>Expenses</b>				
General	\$19,554.00		\$11,846.00	
Mailing	\$ 4,695.00		\$ 5,191.00	
State Fair	\$17,733.00		\$18,186.00	
Queen Program	\$ 3,050.00		\$ 3,870.00	
Annual Meeting	\$ 7,372.00		\$ 8,029.00	
Misc. Expenses	\$ 538.00		\$ 2,150.00	
Total Expenses		<u>\$ 52,942.00</u>		<u>\$ 49,272.00</u>
Net Income/Loss		<u>\$ 3,712.00</u>		<u>\$ 8,558.00</u>

An audit of the finances was done by the Finance Review Committee consisting of Pat Ennis, John Johnson, and Elaine Johnson on October 26, 2011.

Melanie Bower  
Treasurer, Iowa Honey Producers Association



# 2 Frame Plastic Extractor

5 3/8" frame placement



9 1/8" frame placement



6 1/4" frame placement

HH-130

~~\$199.95~~

**Sale Price!**

**\$159.95**

**Delivered!**

Sale price effective Aug. 1-31, 2011



~~\$209.35~~

**Sale Price!**

**\$165.95**

**Delivered!**

Sale price effective Aug. 1-31, 2011



HH-132

## Plastic Extractor Combo

### Kit Includes:

- 2 Frame Plastic Extractor
- Plastic Unapping Scratcher
- Extra Fine Filter For 5 Gallon Pail

### Available Option:

**HH-161**

17" Metal Stand.....\$49.95

**FREE SHIPPING!!\***

\*On Most Orders Of \$100 Or More.  
Lower 48 States Only. Prices & Shipping Offer Subject  
To Change Without Notice.

**MANN LAKE**  
**WE KNOW BEES**

An Employee Owned Company

**800-880-7694**

**www.mannlakeltd.com**





**Central Iowa Bee Supply**  
 Cash and carry bee equipment  
 supplier of woodenware, tools,  
 suits, medications and nutritional  
 products from Dadant & Sons.  
 Custom woodenware built by our  
 own cabinetmaker is also available.

**Owners: Don Charleston and  
 Susan Jones**

**Our shop is located at  
 14535 NE 88th St., Maxwell, IA.  
 Phone number is 515-387-8707 or go  
 online to cibeas.com or email us at  
 cibeas8707@gmail.com for your  
 bee supplies.**

**Open: Thurs. Fri. 4-8 p.m.,  
 Saturday 9 a.m. - 4 p.m.**

**We want to be your Central Iowa  
 bee equipment supplier for your  
 hives and all the supplies you need  
 to get started in the wonderful world  
 of honey bees!**



**Come check out our shop 7 miles northeast of Elkhart,  
 or 5 miles southwest of Maxwell. When you need a Super  
 immediately for honey production - we are the ones to call.  
 When you need medication immediately - we are the ones to  
 come to. Cash and Carry. No more waiting on the FEDEX  
 to show up in a week. You come and look at what you want  
 and walk out with it. No more shipping cost to worry about.  
 If we don't have it in stock, we will order it.**

## **For All Your Packaging Containers For Packing Honey**

**( No Order To Large or Small )**

### **BL Plastic Containers, LLC**



**"We Built Our Business on  
 Service, Quality, and  
 Dependability."**

**BL Plastic Containers, LLC  
 Unit 109  
 1425 Metro E. Drive  
 Pleasant Hill, IA 50327**

**Phone: 515-266-6112  
 Fax: 515-266-1112**

**sales@blplasticcont.com  
 www.blplasticcont.com**

## **LAPPS BEE SUPPLY CENTER**

**500 SOUTH MAIN STREET  
 REESEVILLE, WISCONSIN 53579**

**Beekeeping & Candlemaking  
 Supplies**

**FREE CATALOG  
 1-800-321-1960**

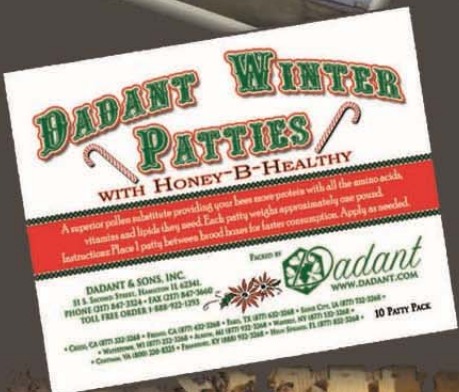
**"Serving the beekeeper  
 for 25 years"**



**NEW!**



# Dadant Winter Patties



**Not sure your bees have enough stores to make it through the winter? Try these:**

Dadant's winter patties are a multifunctional patty, high in carbohydrates and 3% protein to help keep your colonies strong through the winter months. Contains: sugar, MegaBee and Honey-B-Healthy

- \*Can be used in winter & early spring in place of candy boards
- \*Readily accepted by the bees
- \*Convenient for all beekeepers
- \*Currently available at Dadant Corporate Office-Hamilton, IL



M0190040P3C 40 lb. box  
\$44.95



**www.dadant.com**  
**888-922-1293**



# The Buzz Newsletter

Iowa Honey Producers Association  
207 S.E. Diehl  
Des Moines, IA 50315



## Officers

**President:** Curt Bronnberg  
1433 Hull Ave.  
Perry, IA 50220  
(515) 465-5939  
CBronny823@aol.com

**Vice President:** Pat Ennis  
1040 Union Ave.  
Goodell, IA 50439  
(641) 444-4767  
flat\_Lander@lycos.com

**Secretary:** Mary Ebert  
705 Hwy. #1 West  
Iowa City, IA 52246  
(319) 354-6696  
Mebert@netins.net

**Treasurer:** Melanie Bower  
207 S.E. Diehl  
Des Moines, IA 50315  
(515) 287-6542  
melrb@msn.com

**Historian:** Peggy Ennis  
1040 Union Ave.  
Goodell, IA 50439  
(641) 444-4767

**Past President :** Donna Brahms  
14922 535<sup>th</sup> Street  
Griswold, IA 51535  
(712) 778-4256  
mbrahms@netins.net

## District Directors

**District #1** Regina Hoy  
19295 165th Street  
Eddyville, IA 52553  
641-660-0772  
ginajscoupons@hotmail.com

**District #2** Louise Johnson  
34147 310<sup>th</sup> St.  
Guttenberg, IA 52052  
(563) 252-2340  
LouiseJ@alpinecom.net

**District #3** Dennis Nielson  
6948 25th Ave.  
Newhall, IA 52315-9620  
319-223-5806  
nielsondl@fbx.com

**District #4** John Johnson  
3422 Clinton Court  
Ames, IA 50010-4371  
(515) 450-5606  
wjohng@aol.com

**District #5** Jack Trowbridge  
20041 235th Street  
Decatur, IA 50067  
(641) 446-3123

**District #6** Larry Boernsen  
6724 200th Street  
Ocheyedan, IA 51354  
(712) 735-4205  
lm5kbees@iowatelecom.net

## State Apiarist

Andrew Joseph (515) 725-1481  
andrew.joseph@iowaagriculture.gov

### Back-to-Basics Beekeeping Club

Contact: Eves Cadwallader  
2420 285th St.  
Oskaloosa, IA 52577  
(641) 673-3993  
weic@kdsi.net

### Central Iowa Beekeepers Association

Contact Arvin Foell  
30930 530<sup>th</sup> Ave.  
Kelley, IA 50134  
Home phone 515/597-3060  
Cell phone 515/450-9494  
ajfoell@huxcomm.net

### Des Moines Backyard Beekeepers

Contact: Julia McGuire  
jcammcguire@yahoo.com



**IDALS website**  
www.agriculture.state.ia.us

**National Honey Board**  
www.honey.com

## Iowa Honey Queen Program

Connie Bronnberg 515-480-6076  
cbronny823@aol.com

### Iowa Beekeeper Clubs

#### East Central Iowa Beekeepers

Contact: Dave Irvin  
2254 S. Riverside Dr.  
Iowa City, IA 52246  
(319) 351-6205

#### North Iowa Bee Club

Contact: Pat Ennis  
1040 Union Ave.  
Goodell, IA 50439  
(641) 444-4767  
Flat\_Lander@lycos.com

#### Northeast Iowa Beekeepers

Contact: Louise Johnson  
34147 310<sup>th</sup> St.  
Guttenberg, IA 52052  
(563) 252-2340  
LouiseJ@alpinecom.net

#### Northwest Iowa Beekeepers

Contact: Larry J. Boernsen  
6724 200th St.  
Ocheyedan, Iowa 51354  
(712) 735-4205  
Lm5kbees@iowatelecom.net

#### Southeast Iowa Beekeepers

Contact: Vernie Ramsey  
22781 Route J16  
Birmingham, IA 52535  
(319) 498-4355  
Vdramsey@netins.net

#### Southwest Iowa Honey Producers

Contact: Mike & Donna Brahms  
14922 535th Street  
Griswold, IA 51535  
(712) 778-4256

#### Friendly Beekeepers of Iowa

Contact: Judy Spence  
12839 Carpenter Trail  
Carlisle, IA 50047  
(515) 988-8397  
jespencejr44@gmail.com

### Additional Links and Emails

**American Beekeeping Federation website**  
www.ABFnet.org

**Iowa Department of Inspections and Appeals**  
Mark Speltz  
(515) 669-3266  
mark.speltz@dia.iowa.gov.