



The Buzz

Newsletter of the Iowa Honey Producers Association

<https://www.iowahoneyproducers.org/>

Special Edition
April 2021

Inside the Issue



<https://eberthoney.com/>



2021 Summer Field Day

Plan on attending the 2021 Summer Field Day on July 10th! See more details on page 11, register on Page 19

New Editors

Learn about the new duo of editors for the IHPA on Page 2

The Iowa State Fair & the IHPA

Get all of the details about how you can volunteer for the IHPA at the Iowa State Fair & class entries on Pages 5-8

Time Marches on

by Ron Rynders

Time marches on. And as it does, things change.

Roy Kraft and I had an agreement: if ever he found a person he chose to take over being editor of the Buzz, I would be glad to support him/her in any way possible. Recently the call came, and Kelsey Wigans is now the editor of our fine magazine.

I am filled with gratitude and good memories of the years I served in this capacity. All I want to say is "Thanks!" I'll always treasure the good memories, the best of which is the Annual Meeting where Roy surprised me with an award. All the good people I have met (now I call them friends), exchanged emails with, and introduced many of them through the paper to the rest of you—all of them have one thing in common: **bees**. And we find that bond to be mysteriously gratifying.

Continued on Page 3



Hello!

I am so thankful for this opportunity to be the Editor for the Buzz! I am so grateful that my bee mentor, Lisa Montgomery, has agreed to join me in this journey of editorial work. I am the Seed to Table Manager at Gilmore City-Bradgate Elementary (known as GC-B). By training I am a Registered Dietitian Nutritionist. I graduated from Iowa State University with my Bachelor of Science in Dietetics, and went on to complete my Master's Degree from Southern Illinois University-Carbondale, and Dietetic Internship in Springfield, Illinois. I grew up in Tama County, went to North Tama County Community School District, where I believe the idea of small town love, and collaboration, along with the mentality that it takes a village to raise our children was instilled in my heart. Today, our family lives in rural Renwick. (I am almost neighbors with Roy Kraft, and I didn't even know it!) My husband, Lucas, and almost one and a half year old daughter, Leah, our dog, and a few ducks are living out in the middle of nowhere. I also do a few photography sessions on the side, and find myself baking and doing other crafty things through the business name "30 Miles from Nowhere," because that is exactly where we live!

Hi There!

By Lisa Montgomery

I've been in the bee game for about 7 years now. My husband, Scott, myself, our dog Riley and three garage cats (Levi, Q, and Gram) live in the middle of nowhere also...just north of Humboldt (and west of Kelsey!). My "9 to 5" as it were, is being the Accounting Supervisor with the Arabian Horse Association in Aurora, Colorado. I moved to Colorado from Iowa when I married Scott in 1998. That is where my bee obsession/fascination all started. Through a work event in probably 2000, I got to speak to the president of the National Honey Board.. I was fascinated but could not really see how to raise bees in the city. However, when we moved back to Iowa I decided that my fascination could turn into reality (and thankfully I was able to keep my job with AHA to pay for it all). So, I took the "B" from my maiden name "Buening" and started Lisa Bz Honey. I got my first two hives in 2014 and it was a disaster, but I tried again and again. As with any beekeeper, I've had my ups and downs but the fascination continues...

Because of my position at GC-B I am able to teach four year old preschool through sixth graders about agriculture, nutrition and much, much more! Through some hard work, and by the grace of God, we received a grant from the America's Farmers' Grow Rural Education (Bayer Fund) that allowed us to start raising bees in May of 2020. Our love of bees has grown throughout the year, and led me to wanting to know ALL of the information about bees. I put together an online Beekeeping Conference in February, which has led me to where we are today. Connecting with people is one of my favorite things to do. We all have things we can learn from one another, and that is something I am hoping to do through The Buzz. I am very open and willing to accept comments and suggestions, and to hear from YOU!! Please feel free to reach out to me by sending an email to ihpaeditor@gmail.com. I am looking forward to serving you, and your needs!!

Warm wishes,

Kelsey Wigans

Last year, I got the opportunity to mentor Kelsey and the kids at GC-B school. I have to say, I was pretty sure I was NOT the right person for that. How could I mentor someone when I am still learning? But what I have learned so far is that I will never stop learning, but I could pass on what I have learned thus far. It's been my privilege to be able to do so.

So another new adventure in helping your new editor, Kelsey, edit The Buzz? Life is full of adventure...

-Lisa Montgomery



by Ron Rynders



So as I now send Kelsey some files and get her started, I wish her the best. I'm secretly hoping that she someday will have questions. So, that teaches me that I'm not ready to just turn and walk away. I'll always look forward to IHPA events where I'll run into you good people. I do hope that MANY of you will jump up and send her something—an article, an ad, an opinion—and then she'll print them, and we'll all learn from each other. It's really not about Kelsey; it wasn't about Ron. It's about the bees, and let's never forget our debt to these creatures of God and seek to do whatever we can to promote their success and good health.

God bless you all!

IHPA OFFICER & DIRECTOR NEWS



PRESIDENT'S REPORT

Roy Kraft

Iowa beekeepers,

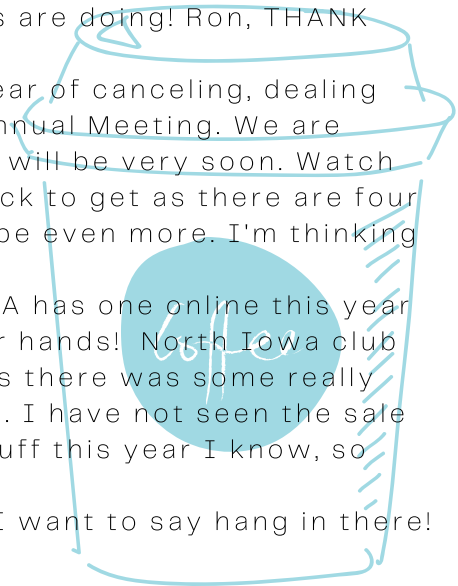
We have decided to publish an extra issue, because we have a lot to announce. Ron Rynders, our Buzz Editor, has retired. Some time ago Ron had indicated that if a replacement was found he was ready to step aside. Ron brought to my attention that we need someone that is, "very detailed orientated, organized, and a beekeeper." I bring this up because Ron came to me when he came on board with a strong will of, "I can do this," and then asked me how? I remember saying to him, "Let's get an issue out and improve every month." Wow, did he ever! He has made our Buzz a nice little paper IHPA members love to get. He wanted this paper to always be the best.

So I want to at this time introduce Kelsey Wigans, our new Editor, and Lisa Montgomery, Assistant Editor. I always felt from Ron the pride he had in this paper, and Kelsey is everything Ron wanted and more. I'm very happy she has accepted this opportunity. Lisa has been part of my bee club for years, and has a go getter attitude that will serve us tremendously well. We will have a smooth transition. I am very thankful for Ron's service to the IHPA. I wish him the very best and look forward to a cup of coffee and finding out how his bees are doing! Ron, THANK YOU for your service to the IHPA.

We have more announcements. Cheri Van Sickle has had quite a year of canceling, dealing with Co-vid backlash, as I call it. Mike Palmer has canceled for the Annual Meeting. We are presently securing a replacement. Hopefully we can announce who it will be very soon. Watch our web page as we will try and post ASAP. Speakers are always a trick to get as there are four meetings between Nov. 1 and Dec. 1 across the country. There could be even more. I'm thinking Cheri will write more on this in upcoming newsletters of The Buzz.

Now for a happy note. We have auctions coming up real soon. CIBA has one online this year coming up here very, very soon. Maybe the same day this gets in your hands! North Iowa club has an auction as well. I just want to say take a look at these folks, as there was some really good stuff at the CIBA auction when I went there a couple years ago. I have not seen the sale bill yet, but take a look. The North Iowa Club has some really good stuff this year I know, so CHECK THESE AUCTIONS OUT. There are always bargains at them.

I need to wrap up here and get going. Cheri, my event coordinator, I want to say hang in there! We will make it happen this year! Good night all!



IHPA OFFICER & DIRECTOR NEWS

TREASURER'S REPORT

Rhonda Heston



Renew your membership! IHPA membership runs from Jan 1–December 31st. On the back of the Buzz, above your name, you will find the expiration date. You will find a new membership form on Page 20. You may pay your dues via credit/debit card, cash or check. Send to Rhonda Heston, ihpatreasurer@gmail.com with **INVOICE IHPA** in the subject line.

ALL people that have not renewed AND paid their membership by May 1, 2021 will be eliminated from the system to obtain The Buzz, and other important IHPA Information. Please renew NOW to avoid missing up-to-date information.

If you have any questions please contact Rhonda at (515) 724-2124.



STATE APIARIST REPORT

Andy Joseph

EXCITING EVENT NOTICE!!

*An Evening with our Apiary Judge Ginny Mitchell
May 29th at 6:30 p.m.*

Learn what the Judge is Looking For! Tips & Tricks for Preparing Perfect Apiary Entries

Ginny is a knowledgeable beekeeper, entomologist, and lover of all-things-BEE. She coordinates the ISU Insect Zoo, sharing her knowledge of insects to people of all ages, all over the state. We've been very lucky to have Ginny as our State Fair Apiary Contests Judge for several years now. This is a big job, and one that requires her unique skill set and her passion for poring over the details of each of every exhibit.

If you've ever wondered what in the world the judge looks for in an observation hive, how to get that Blue Ribbon for your honey, beeswax art, or a photo class, or if you've ever had an idea for assembling one of those awesome window display cases, but didn't know how to start... This is your chance!

Ginny has created a presentation itemizing how she judges each class of entry. She'll share lots of insight on just how to create perfect exhibits. This will be interesting and educational for all! Additionally, IHPA President and dedicated fair exhibitor, Roy Kraft, will speak about volunteering in the IHPA Honey booth – which is always a great time. I will briefly discuss the “superintendency” nuts & bolts of obtaining your entry tags, delivering your exhibits just prior to the fair, earning points, ribbons and awards, and I'll attempt to answer any other questions you may have.

See more details, and Zoom link on Page 8

RULES FOR 2021 STATE FAIR PRODUCTS BEING SOLD AT THE IHPA BOOTH

1. There will be a four person committee including the booth manager
2. Applications must be sent by email to all four committee members:
 - i. Kris Silvers kristin.silvers@gmail.com
 - ii. Ed St. John esj178@gmail.com
 - iii. Heidi Love bhlove5@aol.com
 - iv. Doyle Kincy dwkincy@msn.com **and** paper applications must be sent to Doyle Kincy at 7304 Monroe Ct. Urbandale, IA 50322
3. All liquid and comb honey is to be from 2021 harvest (except honey for lemonade)
4. All glass honey and creamed honey containers must have a protection seal
5. All plastic honey containers must have a pressure seal (this includes all large containers)
6. All products must show proper labeling (supplier, name, city, phone #)
7. Honey for the "Honey Lemonade" (50#) will be a sealed bid only. Low bid takes all
8. Pollen must have a "US Pollen" label
9. **ALL CONTAINERS NEED TO BE CLEAN, NON STICKY; AND ARE SUBJECT TO REJECTION BY BOOTH MANAGER**
10. **Due to the time frame of honey styx production, it will be a one year commitment starting 2022**
11. **FIRM Cutoff Date: June 1, 2021 (must be postmarked by this date)**
12. Any item **not listed** on the application sheet, or any specialty items, you wish to market at the IHPA State Fair Booth needs to be approved by the booth manager, by the committee deadline 6/1/21
13. The committee will meet on 6/19/2021. Place TBD. General IHPA members will be allowed to witness. Check Facebook and website for location
14. One application/household. Must be current IHPA Member

Sole Classes

1. There will be one person that will have a sole class of honey or item based on price list
For example: one person will have ALL 24 oz. bears for the state fair based on price list. If two or more producers apply for that item, it will be decided by a draw, winner will take the whole class
2. You will only be allowed to win every other draw, however, if you are the only one that entered that class you will get the class and be eligible for the next draw
3. Draw order is per list on application sheet
4. If you win any sole class you ARE NOT eligible for case lots, however, if you are not chosen in the draw for any of the sole class, you will be eligible for case lots but you must have it on your application sheet if you are wanting to supply those

Open Classes

1. All beeswax products (candles, ornaments, blocks, soaps, lotions, lip balms, etc.) must be packaged to maintain cleanliness and for presentation (this will be the booth managers discretion)
2. Please submit a list of what you would like to market at the 2021 IA State Fair. Please provide a phone number where you may be reached if committee has questions
3. You are only allowed to supply a maximum of four scents of each product

Creamed and Flavored Honey Rules (MUST BE IOWA HONEY)

1. Flavored and creamed honey must come from a certified kitchen
2. A copy of the license must be on file with the booth manager, and booth manager must have them with them at the state fair **(License must be attached or mailed with application package)**
3. If more than one person is wanting to bring a flavor, a draw will decide who brings the flavor
4. You are required to provide a 1 oz sample, by committee deadline, if you wish to bring pure creamed honey (Sample to Doyle Kincy by noon on 6/19/21)

Case Lots

The purpose of the case lots is a way for the small beekeeper to provide honey to the fair

1. Case lot classes are 1 lb. glass, 1 lb. plastic and the 12 oz. bear
2. Case lots will be in case quantities of 24 bottles; **minimum is one case of 24/class**
3. If you do not win any of the "Sole Class" categories then you will be eligible for case lot (This must be marked on your application to be considered)
4. **Clean up rule:** in the event the required quantity cannot be fulfilled through the case lot system, those participating in the "Sole Class" will be encouraged to help supply the additional quantity needed of each class through a draw. (One person/class decided by draw, if needed) These items will not be placed out until after Day 5
5. You may bring no more than four cases of each class

Cut Comb, Ross Rounds, and Chunk Honey

1. Must be in a sealed container
2. Must be well-drained without liquid honey (chunk honey excluded)
3. Quality standards will be used (clean capped with all the cell capped)
4. Needs to weigh at least 14 oz. (chunk honey excluded)
5. MUST be frozen for a minimum of 48 hours prior to arriving at the IA State Fair, subject to rejection at booth manager's discretion (**this includes chunk honey**)

Delivery of Products

1. All products must be delivered to IHPA booth at the Iowa State Fair
2. Product must be delivered between Sunday to Wednesday (unless other arrangements are made with the booth manager)
 - i. Sunday Noon–6:00 p.m.
 - ii. Monday–Wednesday 10:00 a.m.–6:00 p.m.
3. You MUST provide an invoice when product is delivered
4. You MUST complete a W-9 (provided on-site)
5. Please make plans to pick up unsold product on Sunday evening 8:00 p.m.–10:00 p.m. or Monday between 8:00 a.m.–Noon (unless other arrangements are made with the booth manager)

WE NEED YOU!

Plan to volunteer at the Iowa Honey Producers Association Booth for the Iowa State Fair August 12-22, 2021

We have an annual booth at the Iowa State Fair on the second floor of the Ag Building. We sell honey products, honey lemonade, lotions, soaps, beeswax items, promotional merchandise, etc.

We will still continue to schedule volunteers for candle rolling for the Queen Program this year. This is our main fund-raising event, which is needed to help support our various educational programs.

We ask our members to help make this event a success, by volunteering their time—assisting with cash register sales, bagging product, pricing, mixing and serving honey lemonade, candle rolling, and offering honey samples, etc.

Each volunteer will be provided with **free honey lemonade** if you get thirsty while working at the booth, and a **FREE pass to get into the fair!**
(PLUS you get to enjoy the great entertainment at the fair before/after your shift at the booth.)

We had a successful 2019 thanks to all those who participated! Over the years we have had wonderful people volunteer their time and would love to see you again. We encourage new members, friends, families and bee clubs to participate in this event too, because we need everyone's support to make this event a success.

We have three shifts daily, 9:00 am–1.30 pm, 1.30 pm–6:00 pm and 6:00pm–9:00 pm (15–18 people needed per shift). If you are able to volunteer for one or more shifts during August 12–22, we would like to hear from you!

All you need to do is mail the completed form on Page 21, or email the same details to bhlove5@aol.com, or call/text Heidi Love at (515) 729-1761.

If you have any questions, please do not hesitate to ask.

We've added FOUR new classes of competition to our Apiary exhibits at the Iowa State Fair
This means there are now 28 ways to enter and compete!
Something for everyone, no excuses!

Below are descriptions of the new classes. You can find the full details for all classes by googling "Iowa State Fair Apiary Premium Book." It should be the first thing to come up. (I would include the direct link here, but I'm still seeing last year's book and I expect the link will change as the fair updates for 2021.) I would love to have the shelves bursting with exhibits this year. If you've never taken part, let this year be the year. If you have any questions about getting started with showing at the fair, just ask. Feel free to call or text (515) 326-5765, or email me at Andrew.Joseph@iowaagriculture.gov

The Best Honey in Iowa!

Submit one small (2 oz – 8oz) jar of your best liquid honey extracted as part of this year's crop (2021). **The jar must be "blacked out"** to hide the appearance, color and clarity of the honey. This may be done with black paint or black tape applied to the outside of the jar. The jar may bear no individual labeling in order to maintain the exhibitor's anonymity.

ONLY 1st Place Blue Ribbon will be awarded.

Score Card:

Taste; The Best Honey as perceived by our Iowa State Fair Apiary Judge: 100 pts.

TOTAL: 100.

Youth Class- Three 12 oz. Plastic Bears

Score Card:

Container: free from defects, 5pts.

Flavor: free from burnt taste, chemical contaminants or other off flavors, 10 pts.

Color of honey, 20 pts.

Moisture content, 20 pts.

Uniform volume of honey in all containers, 15 pts.

Clarity of honey, 15 pts.

Freedom from impurities including foam and granulation, 15.

TOTAL 100.

Youth Class -

One Frame of Honey, sealed, ready for extracting, wrapped in clear plastic wrap

Score Card:

Cleanliness of frame, 5 pts.

Completeness of comb attachment, 10 pts.

Uniform and completely filled honey cells, 25 pts.

Uniformity of color of honey (comb, cappings, honey), 25 pts.

Thickness of comb for ease of uncapping, 10 pts.

Completeness, uniformity and cleanliness of cappings, 25 pts.

TOTAL 100.

Youth Class-

One frame of empty extracting comb wrapped in clear plastic wrap

Score Card:

Cleanliness of frame, 10 pts.

Comb attachment and finish, 25 pts.

Uniformity of cells, 25 pts.

Uncapped finish, 30 pts.

Color of wax, 10 pts.

TOTAL 100.

Please note that these new classes are offered by the Iowa State Fair as "ribbon-only awards", meaning the fair will not be paying the \$\$ awards as in all the other, previously existing, classes. The Fair cited COVID as the reason, but fingers are crossed they'll add the money premiums for these four classes next year. That said, these new classes (as well as a few of the existing classes) will have outside sponsorship! Essentially, bonus prizes for entering and winning.

New Classes - Continued from Page 7

The IHPA has generously pledged a \$100 prize to the winner of the Best Honey in Iowa Class.

By summertime, we'll have prizes for all the youth classes as well. There has long been an additional "Herman Bickle" \$25 sponsorship to the winner of the Beeswax Art class. Each year the IHPA offers a \$10 premium for every Observation Hive entry. Additionally, each year the IHPA awards an additional Sweepstakes Prize for the beekeeper who wins the most across all classes of competition.

ENTRY DEADLINE IS JULY 14, so don't delay!

Entries must be submitted online or postmarked on or before July 14. **Unfortunately no late entries will be accepted.** Entries may be made online at www.iowastatefaireentry.org or by mail. As a requirement for entry, each participant shall pay a fee of \$2 per entry. This fee applies in all classes except Limited Class 21 (window displays) which is \$4. The July 14 deadline is for purchasing your entry tags – **It's worth noting** that you do not have to declare which classes of competition you'll be entering! Essentially you have nearly up until Fair time to decide which classes you'll be preparing your entries for. Many people will purchase a handful of entry tags, and then prepare as many entry exhibits as their time and resources allow.

I'm looking forward to a great showing!



Zoom with Iowa State Fair Apiary Judge, Ginny Mitchell Iowa State Fair Apiary Superintendent, Andy Joseph IHPA President, Roy Kraft

Judge Ginny will present tips and tricks to preparing your ISF Apiary Exhibits. Class by class, she will fill us in on just exactly what the judge looks for, and how to do well with your entries

Saturday. May 29th from 6:30 pm-9:00 pm.

Please log into Zoom by 6:20 p.m.

To join our Zoom Meeting:

<https://us02web.zoom.us/j/87614248250?pwd=QlZpd2ljQ3ppKlhJdVZvUU1taEJOUT09>

Meeting ID: 876 1424 8250

Passcode: Apiary

One tap mobile

+13126266799,,87614248250#,,,,*616542# US (Chicago)

+19292056099,,87614248250#,,,,*616542# US (New York)

Bee Club Bulletin

What is happening around Iowa?



CIBA Auction Update

Saturday, April 10-Saturday, April 17th

For more details: <https://www.centraliowabeekeepersassoc.org/auction-2021>

The Central Iowa Beekeeping Association (CIBA) is going to have the auction in April and it will be online. We apologize for the need to cancel last year, and we have decided that a live auction is not an option for us this year either. The details of how it will work will be in the next CIBA BEELINE newsletter, monthly President's newscast and the CIBA website. NOW is the time to think about what you want to sell as well as what you want to purchase.

This is an auction by beekeepers for beekeepers

We will be advertising what is going to be sold in advance of the auction. The Online Auction is tentatively set for 7 days, April 10, 2021 to April 17, 2021 with bidding closing at noon on April 17. Please keep checking for more information at the CIBA website (www.centraliowabeekeepersassoc.org).

North Iowa Beekeepers' Club Auction

Saturday, April 24 10:00 a.m. Auctioneer: Roy Kraft

P & P Honey and Bee Supply Inc (Pat & Peggy Ennis @ 2105 110th St, Goodell, IA 50439)

In case of rain, auction will be held in their heated shop

We all have extra bee stuff in the shed, garage and barn that would be of great benefit & value to someone else. So now is a great time to dust off, repair, paint and bring it to the auction!

We welcome your new / gently used beekeeping and or poultry items at the auction!

To consign your items please call, text Pat @ 641-444-4767 or 515-293-2601 or email @ pphoneyandbeesupply@gmail.com. **Consignment rate:** Before April 1st, - 10%. After April 1st, - 15%.

Contact us for a list of consigned items! A list will be periodically updated on the North Iowa Beekeepers Facebook Page. **All beeswax combs to be sold will be inspected before the auction.**

Restrooms will be available (port a potties). Coffee, Hot Chocolate, Bottled Water & Rolls, Baked Goods will be available for a donation/purchase.

All auction proceeds will benefit the North Iowa Beekeepers' Club and the youth of the area thru speakers and events with the purpose of educating, promoting and, or by mentoring the craft of beekeeping to all beekeepers throughout North Iowa.

If you wish to help or donate food goodies, please contact: Tim Stumo, Richard Vonderohe or Madison Rau at northiowabeeclub@gmail.com

As of 2-9-2021, the auction will be live: in-person; masks are not required as in compliance with mandate of Governor Reynolds. We're looking forward to seeing everyone at the auction!

Bee Club Bulletin

What is happening around Iowa?

North Iowa Beekeepers' Club

Richard Vonderohe will be taking over as President.

Address: 113 N. Madison Ave in Mason City, IA. Phone number: (641) 430-8673.

Email: vonderohebees@hotmail.com

Dubuque Swiss Valley Bee Club

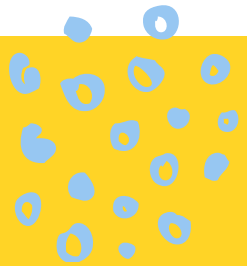
Meets monthly from 11:30-12:30 on the fourth Tuesday

For more details please email Diane Thoma: diane.thoma9046@gmail.com

Southeast Iowa Beekeepers Club

The President of SE Iowa Beekeepers is Steve Hemphill

Email: snwfarm@mepotelco.net Phone number: (319) 985-2111



Want information about your bee club posted here?!

Great, we do too!

Keep us up to date about what your bee club is up to!

When and where are your meetings typically held? What areas of Iowa do you cover? How much does membership cost? What do you wear to meetings, is there food there (you know....food attracts people, just like bears are attracted to honey ;)), what type of support does your bee club provide that should make others feel like they are missing out! WE WANT TO KNOW!

Send any exciting information you have about what is happening in your area. Having a meet and greet, field day, have a change in officers, have new members join your group? WONDERFUL! Let's recognize them, we are here to cheer you on! Share about it so we can join in your celebration.

Have a topic of conversation that wasn't really answered by people in your group? That's ok, there are other beekeepers around the state that are here to help YOU and your bees. Maybe you have an idea, and don't know if it will be successful, or if anyone has ever tried it before. Have some money saving tips for beekeeping. PLEASE. SHARE!

If this conversation has sparked your interest please email details to
Kelsey Wigans, Editor, at ihpaeditor@gmail.com

2021 SUMMER FIELD DAY

**EBERT HONEY LLC
MT VERNON, IA
ADAM EBERT**

"KEEP the KNOWLEDGE FLOWING"

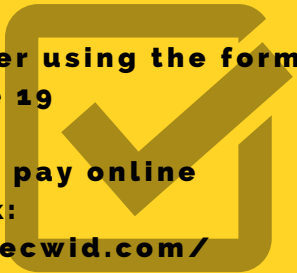
July 10, 2021

1090 Highway One North
Mount Vernon, IA 52314

*8:30 a.m.-4:00 p.m.
Registration 8:00 a.m.*

**Please Register using the form
found on Page 19**

**NEW! You may pay online
using this link:
<https://ihpa.ecwid.com/>**



*Hear from Guest Speaker
Dr. Matt O'Neal
Professor of Entomology at ISU*

*Networking for bees of all levels!
Breakout Sessions
Lunch
Board Meeting*



SAVE THE DATE

*2021 IHPA Annual
Meeting*

Friday, November 12-Saturday, November 13

Jordan Creek Marriott Hotel
Des Moines, IA

Michael Palmer is no longer able to be our guest speaker at the Annual Meeting, however, we are still looking forward to a great event!

We will be posting up to date information on the IHPA Website and in The Buzz

Legislative News

Iowa Honey Bee Day *Beyer*

Lobbyist: Jamie

Because of Co-vid, it is decided to not celebrate Iowa Honey Bee Day at the Capitol this year. They will not let us reserve the room and meet with the Legislators like we have in the past. It was thought that we could have scheduled a zoom "meeting" with legislators for beekeepers to connect with them. In discussions with some legislators they do not think that very many would connect with us. I think that we would have some beekeepers that would have connected but who knows. So hopefully next year things will be somewhat back to normal. -Jamie Beyer

Farm-To-School Expansion Advances *Lobbyist: Jim* *Obradovich*

An IHPA back proposal, included in Senate File 578, would add Iowa produced honey to the products eligible for schools to purchase through the Farm-To-School program.

The bill was approved by committee earlier last week and is now ready for consideration by the full Senate.

Specifically, the program which is Included in the Department of Agriculture omnibus policy proposal, assists schools and school districts in purchasing food products derived from food commodities produced on a farm and either processed on the farm or processed at a business premises located within 30 miles of the school or school district's borders.

We will keep you updated on this important policy update.

What do you want to see in The Buzz?

You spend hours looking at The Buzz, right? Let me guess...you spend even more time waiting for it to arrive, right?! So.....What do you want to see in The Buzz?

Do you want to have a search for a specific picture in The Buzz, like a tiny bee 🐝 within lines of text or in a picture, and whoever finds it first, and emails me gets a prize?

Do you want a bee photo contest? Or maybe a "Bee Kind" section where people are recognized for doing something helpful for another beekeeper? Or maybe a coloring contest for adults, and kids?

This is your newsletter, I just put it together. Tell me what YOU would like to see by emailing me, Kelsey Wigans, Editor, at ihpaeditor@gmail.com



From the Beeyard

A collection of information from those with direct, personal knowledge about beekeeping

Written by Phil Ebert

As I start to write this, it is 20 degrees out. There is enough breeze that it feels pretty raw. Unfortunately, this is the warmest day we are going to have for a while. I had quite a few packages to go to the post office yesterday (the day of the blizzard). Visibility was pretty good at my place. About a mile west of my place, the snow was blowing so bad that I couldn't see the road. I decided I better turnaround and go home. I managed to drive into the ditch in the process. It was deep enough that 4-wheel drive was no help. I had to walk home. Fortunately, the wind was at my back.

Our winter jobs are nearing completion. We have new wax in all of our cut comb boxes, rims have been installed on the underside of our migratory lids so we have space for patties and meds. The bum pallets have been fixed. We were short two gears in the '97 pickup. It had been sitting since October. We finally made space to get it inside. It was four wheel drive so I didn't want to take the tranny out from the bottom. We cut a hole in the floor and pulled off the top of the tranny. A roll pin had come out of one of the shifter forks. The fork slid on the rail so the gear shift lever couldn't reach it. Other than having to take the seats out and cut a hole in the floor, it was a quick fix.

Our death loss has been considerable—about 60%. We used various mite treatments. None of them worked. We were there on time at the end of July with counts in the single digits. After treatments we were getting counts in the 20's and 30's. If you read my article last quarter, you know that already. Because our losses were so high, we are going to nuc in California. That will give us a three week head start if we get any kind of decent weather. That will allow us to have bees to sell but we won't be able to shake packages.

We are not the only ones with a big death loss. If you are ordering bees, make sure your provider has the resources to produce what you need. Two years ago, I had 1200 packages on the books. Our provider called and said they could only get us 300. The whole thing was a nightmare and inspired me to vow never again to resell packages. If we have the resources to shake them, fine; if not, we won't.

If you are fortunate enough to have bees still alive, make sure they don't run out of food. If you fed heavily in the fall and had 60-70# of food in the hive, you have no worries. If you think they are light you may want to feed something. I don't like to feed syrup when it is real cold. Candy boards are a good option but we have never made them. We used to put on an empty rim 1 1/2 thick. We laid a piece of newspaper inside the rim and poured 5-10# of raw sugar on the paper. There are also sugar patties that you can buy.

Bees don't go through a lot of food until brood rearing starts in earnest. A long cold winter retards brood rearing. A warm winter with flying days can speed up the process.

There was a year that had 50 degree days in January. The bees were brooded up strongly by the end of the month. We fed syrup but that was a rare event for that time of year. If you get into the month of March and have wall to wall bees, they will take syrup from a division board feeder even if daytime highs are only in the 30's. Those big clusters can generate a lot of heat.

Even bees with lots of food can die in March. On the first warm days, the sick ones fly out and don't come back. The first time you look at a hive, it may look pretty good. That can be deceptive. After all the sick ones fly off to die, the colony that looked good on the first round may be dwindled down to almost nothing on the next. Sometimes, there are not many bees left but on a warm day, they may all get up on the top bars making it look like you have a good bunch of bees but there won't be many down on the combs. If you have lame colonies, set them on top of the good ones. You don't need any newspaper, just smoke them and put them together. The bees will unite just fine.

We normally don't make any splits until we have bees in both boxes. How you do things will depend on what your goals are, the timing of the bloom in your area and whether or not your bees spent the winter in California. I am not going to go into California. That is a subject in itself. Once there are bees in both boxes, you have something to work with. We pull three frames of brood and shake the bees off the frames. No need to find the queen. If she is there, she shakes off. Put the brood frames in a third box and set it on the hive over an excluder. Bees will move up into the third box to cover the brood. You want some of the brood to be open. That will help to attract the nurse bees. Young bees are more likely to accept a new queen than the old crotchety ones. Within three weeks you will not be able to tell you took anything out. We want the colonies at full strength in case there is an early flow. It is not unusual to get a good flow at the end of May. This can be a problem if you don't get an early flow and are sitting there with a colony full of bees with nothing to do. We tried to counter this by pulling an additional two frames of brood from the really good ones when we supered. We replaced those frames with foundation. The bees to make the crop are already there. They won't miss that brood and we have something to make up late nucs to replace the colonies that go bad. The splits we made remain as singles to make a crop--hopefully. Remember, there is no one true way. You have to adapt to your own conditions. Just because someone else does something does not necessarily mean it is the right thing for you.

I believe there is global warming but it is hard to make that case today (two days after I started this). The temp is below zero and there is a foot of snow on the ground. Think spring!!!

Preciousbees Farm



1828 Y Avenue
Homestead, IA 52236

3# package
bees

Pickup April 28 and
May 12 in Homestead,
IA and Davenport, IA

\$130.00 + tax

Please contact Paul Gardener
(319) 400-4228

Spring Valley Honey Farms Perry Iowa

See us for:

Honey:

50# bucket Honey \$127.00 (\$2.40/lb. + \$7.00 for bucket)

We send 55-gallon drums to Salem, Oregon to have put into styx

Honey Styx:

1-499 \$0.15 ea.

500-1999 \$0.12 ea.

Box of 2000 \$0.09 ea.

Beeswax:

Raw: \$4.50/lb.

Filtered: \$6.50/lb.

Corn Syrup and Protein Patties:

Corn syrup: \$0.40/lb. your container

500+lb. \$0.35/lb.

Candles & Bath and Body Products

We carry a full line of beekeeping equipment!

www.springvalleyhoneyfarms.com

We do not keep regular store hours.

Call Connie @ (515) 480-6076

The Buzz Newsletter Article & Ad Submissions

Until at least August 2021, The Buzz will be quarterly, due to loss of 2020 income from the Iowa State Fair cancellation. We have revised the way we will handle ad sizes and pricings. You must be an IHPA member to run an ad in The Buzz.

We'll publish monthly prices once
we go back to 12 issues

Current Prices

Size	Actual Space	Qtr. yr. Price (\$)	Year Price (\$)
Classified	3 lines, 4" long	15	50
1/8 Page	2" x 4"	75	250
1/4 Page	5" x 4"	150	500
1/2 Page	5" x 8"	220	775
Full Page	8" x 10"	275	1,000

Please send articles, photos and classified ads to
Kelsey Wigans at ihpaeditor@gmail.com

Deadline for submissions is included below:

Newsletter	Due Date for Submissions
Aug. 2021	July 10, 2021
Sept. 2021	Aug. 10, 2021
Oct. 2021	Sept. 10, 2021
Nov. 2021	Oct. 10, 2021
Dec. 2021	Nov. 10, 2021

Ads should be submitted in a Word format, PDF, jpeg, or png designed just as you wish to see them printed.

Don't know what to do for an ad? Don't worry!

Please submit your information, logo, photos, etc. by the **1st of the month** before the issue will be printed, and allow Kelsey to create 1-2 designs for you (for free)!

Article submissions should be 800 words or less.

Payment for advertisements is handled by
IHPA Treasurer Rhonda Heston

Need Honey Containers?

Ebert Honey can help!



ABOUT OUR CONTAINER LINE

Ebert Honey offers competitive pricing on a full lineup of professional honey packaging supplies, featuring over 20 container and bottle styles.

Our container line offers high quality products paired with local customer service.

A FEW OF OUR PRODUCTS:

- Oval Front Bears
- Rectangle Front Bears
- Classic Glass Jars
- Hourglass Squeeze Grip
- Jugs & 5-Gallon Buckets
- Spout, Snap Cap & Flat Lids



ABOUT YOUR CONTAINER ORDER

Ebert Honey welcomes container orders of any size. We offer local pick up, as well as convenient shipping to your door. Our streamlined website makes ordering and shipping fast and easy!

Container orders are processed at our Mount Vernon, Iowa, location. Pick up is arranged ahead of time and is available at both our Mount Vernon and Lynnville locations.

We offer shipping via USPS, FedEx, and Speedee Delivery.



CONTACT OUR HONEY EXPERTS

☎ 319.259.9377

✉ info@eberthoney.com

🌐 www.eberthoney.com

🏠 1090 Highway 1 North
Mount Vernon, Iowa 52314
14808 South 102nd Ave. East
Lynnville, Iowa 50153

f @eberthoney

Tag us on social media or use #eberthoney!

WWW.EBERTHONEY.COM



2021 Package Bees & Queens

Arriving in Washington, IA in late March through early May

Georgia 3-lb. Package with unmarked queen (Italian, Russian/Italian Hybrid, & Carniolan available)

1-9= \$135/each*
10-99= \$127/each*
100-499= \$122/each*
500+= Call for pricing

Georgia 2-lb. Package with unmarked queen (Italian only)

1-9= \$115/each*
10-99= \$110/each*
100+= \$105/each*

California 3-lb. Package with unmarked queen (Italian, Carniolan, & Buckfast available)

1-9= \$145/each*
10-99= \$137/each*
100-499= \$132/each*
500+= Call for pricing

California 2-lb. Package with unmarked queen (Italian, Carniolan, & Buckfast available)

1-9= \$125/each*
10-99= \$120/each*
100+= \$115/each*

--no cage deposits or credits--please recycle or dispose of cages--

Extra mated unmarked queens (Italian, Carniolan, Buckfast & Russian/Italian Hybrid available)

1-9= \$35/each*
10-99= \$34/each*
100+= \$33/each*

*plus 7% IA Sales Tax

5-Frame Nucs with unmarked queen (Italian & Carniolan available)—Pick up in WI only mid-April through May

1-9= \$175/each*
10-99= \$162/each*
100+= \$150/each*
*plus 5.5% WI sales tax

Heritage Honeybee, LLC, PO Box 117; N6007 Hillside Drive, Sullivan, WI 53178

Tim Wilbanks ph: 319-321-2494

email: timwilbanksbees@gmail.com

website: www.heritagehoneybee.com

Spring Valley Honey Farms

Perry Iowa



14405 Hull Ave.

Perry, Iowa 50220

Curt and Connie Bronnenberg

(515) 480-6076

www.springvalleyhoneyfarms.com

This past year, here at Spring Valley Honey Farms the bees came out of the almond orchards in great shape, built up well and produced an excellent crop of low moisture honey. Mite counts were generally low, treatments were still applied, ample protein and syrup was fed, hives were full of bees and seemed to be thriving until October. Then the decline started and our numbers reduced by 50% by December. In mid-January in California many colonies had lost a large part of their population while others remained in excellent condition. We should still have plenty of strong hives coming out of the almond orchards and we will be shaking package bees from our hives from mid-April to late May. We also have a load of packages bees arriving from Koehnans on April 12th.

2 lb. package bees.....	\$104.00 + tax + \$7.00 cage deposit
3 lb. package bees.....	\$127.00 + tax + \$7.00 cage deposit
5 frame nucs.....	\$170.00 + tax
(Saskatraz package bees and nucs are \$5.00 extra)	

Because we feel supplementing carbohydrates and protein is important, we offer a gallon of syrup and protein patty for \$7.00 with the purchase of package bees or nucs.

During package season we are very flexible and usually available, but it is always best to call or text Connie at 515-480-6076 as we do not keep regular store hours. If you call or text an order, we can get order ready and you can pick up at your convenience.

We offer a full line of beekeeping equipment which you can find list and prices of our equipment on our website.

Queens

Carniolan or Italian \$37.00

Saskatraz \$42.00

Corn Syrup

\$0.40/lb. (your container)

\$8.00 for 1 gallon (12 lb.)

500#s or more \$0.35/lb.

Protein Patties

\$2.50 each

Case of 40 Protein Patties \$100.00

Complete Hive Kit – (no honey supers)

\$210.00 (Wood Frames)

\$197.00 (Plastic Frames)

(Includes: 2 Deep Hive Bodies, 18 – frames, 2-gallon feeder, screened bottom board, telescoping cover & inner cover)
Fully assembled and painted.

Complete Hive Kit + Honey Supers

\$330.00 (Wood Frames)

\$305.00 (Plastic Frames)

(Includes 2 Deep Hive Bodies, 18 frames, 2-gallon feeder, screened bottom board, telescoping cover & inner cover, 2 – 6 5/8 boxes + 20 – 6 5/8 frames) Fully assembled and painted.

IHPA LEADERS



IHPA OFFICERS

President: Roy Kraft
P.O. Box 1
Goldfield, IA 50542
Ph: (515) 293-2458
kroyster.rk@gmail.com

Vice President: Kris Silvers
2088 310th Ave
Woodburn, IA 50275
Ph: (515) 418-0996
Kristin.Silvers@gmail.com

Secretary: Heidi Love
18115 F Ave.
Perry, IA 50220
Ph: (515) 729-1761
bhlove5@aol.com

Treasurer: Rhonda Heston
52735 187th Ave
Chariton, IA 50049
Ph: (515) 724-2124
IHPATreasurer@gmail.com

Historian: Dave Korver
3314 510th St.
Maurice, IA 51036
Ph: (712) 541-4803
korverdavid@gmail.com

Past Pres: Eve Vanden Broek
134 Holland Dr.
Pella, IA 50219
Ph: (515) 491-6760
mrstheo@iowatelecom.net

Event Coordinator: Cheri VanSickle
24148 Sumac Road
Neola, Iowa 51559
Ph: (712) 566-9294
vansicklemm@hotmail.com

Webmaster: Eric Kenoyer
IHPA1912@gmail.com

DISTRICT DIRECTORS

District 1: Chris Jackson
524 South 2nd Ave.
Danville, IA 52623
Ph: (319) 850-6559
chrisjjackson1977@gmail.com

District 2: Tom Hart
1107 12th St. NE
Cedar Rapids, IA 52402
Ph: (319) 213-6807
cedarvalleyapiaries@gmail.com

District 3: Ed St John
1642 Oak View Dr. NE
Solon, IA 52333
Ph: (319) 491-4343
esj178@gmail.com

District 4: Jamie Beyer
269 U Ave.
Boone, IA 50036
Ph: 515 231-0215
beyersbog@aol.com

District 5: Jason Foley
13778 Summerset Rd.
Indianola, IA 50125
Ph: (515) 991-4666
jjason@russianbee.com

District 6: Jim Kraninger
2229 195th Ave
Milford, IA 51351
Ph: (712) 330-6329
bojibeekeeper@gmail.com

PROGRAM LEADERS

State Apiarist: Andrew Joseph
Ph: (515) 725-1481
andrew.joseph@iowaagriculture.gov
IDALS website: www.agriculture.state.ia.us

ISU Entomologist: Amy Toth, PhD
amytoth@iastate.edu
www.public.iastate.edu/amytoth/Toth_lab/Home.html

ISU Extension Beekeeper: Randall Cass
Ph: (515) 294-2507,
randall@iastate.edu

Legislative Rep: Jamie Beyer
(see District 4)

**IHPA Queen Program:
Connie Bronnenberg**
14405 Hull Ave
Perry, IA 50220-6343
Ph: (515) 480-6076
cbronny823@aol.com

**Youth Scholarship:
Stephanie Meyers**
26362 G Avenue
Hubbard, IA 50122
Ph: (641) 691-5036
sonshinefarsia@gmail.com

**Bee Emergency Program Info:
Roy Kraft**
(see President)

Editors for "The Buzz"

Kelsey Wigans
402 SE E Avenue
Gilmore City, IA 50541
Ph: (319) 215-7483
ihpaeditor@gmail.com

Lisa Montgomery
lisabzhoney@gmail.com

"ISU : Iowa State University



Iowa Honey Producers Association

2021 Summer Field Day

July 10, 2021

8:30 A.M.-- 4:00 P.M. (Registration 8:00 A.M.)

“KEEP the KNOWLEDGE FLOWING”

EBERT MT. VERNON HONEY, Adam Ebert

1090 Highway One North

Mount Vernon, Iowa

This will be a full day of knowledge exchange for beekeepers of all levels.
A delicious lunch is included in the registration cost.

Name:_____

Address:_____

City:_____ Zip:_____

Phone:_____ Email:_____

REGISTRATION:

Single (Member) \$40.00 before July 3, 2021

Number attending: _____ X \$40.00 = _____

After July 3, 2021 number attending:_____ X \$60.00 = _____

Single non-member: \$60.00 before July 3, 2021

Number attending \$60.00_____ X \$60.00 = _____

After July 3, 2021 Number attending_____ X \$80.00 = _____

Walk-ins on July 10, 2021 are welcome (members and non-members) \$100.00

Please mail your registration forms in as soon as possible to save on your registration fee.

Return this completed form with your check payable to IHPA by Friday, July 3, 2021 to:

Rhonda Heston, IHPA Treasurer

52735 187th Avenue

Chariton IA 50049

NEW!!!! You may now pay online using this link: <https://ihpa.ecwid.com/>

Got questions? E-mail Cheri VanSickle, Event Coordinator at:
vansicklemm@hotmail.com and put **“2021 Field Day Questions”**
in the subject line or call (712) 566-9294



Iowa Honey Producers Association (IHPA) Annual Membership Form

Our membership year runs from January 1-December 31.
See the back of The Buzz Newsletter; your expiration date appears above your name
One copy of The Buzz will be sent per household address

Please PRINT clearly so your information can be read. This is what will be published in the new directory.

First member: \$20.00 TOTAL

First and Last Name: _____ \$20.00

Address: _____

City: _____ State: _____ Zip Code: _____

County: _____

E-mail address: _____

Phone Number: 1st Contact Number: (_____) _____

2nd Contact Number: (_____) _____

At this time we are suspending online readership

May we publish your information in the IHPA Directory

Yes _____ No _____

SECOND MEMBER: \$5.00

First and Last Name: _____ \$

E-mail address: _____

NEXT MEMBER: \$5.00

First and Last Name: _____ \$

E-mail address: _____

DONATIONS:

Additional year(s) of membership Primary # of years _____ at \$20 \$

Additional year(s) of membership NEXT # of years _____ at \$5 \$

Additional year(s) of membership NEXT # of years _____ at \$5 \$

FAIRBOOTH RENOVATION FUND - to be used for improvements \$

GENERAL FUND - to be used for day to day expenses \$

QUEEN FUND - to be used to help the Queen and her travels \$

YOUTH PROGRAM - to be used to provide students with supplies \$

TOTAL: \$

Make checks payable to Iowa Honey Producers Association or IHPA

Mail cash or check to: Rhonda Heston, 52735 187th Ave, Chariton, IA 50049 (515) 724-2124

The IHPA is 501 (c) 5 organization, which gives us the ability to provide you with a tax deductible letter of donation for any/all of your donations. Please indicate if you wish a letter to be sent for the 2020 calendar year Yes ___ or No___

NEW THIS YEAR: If you would like to pay by credit/debit card please email Rhonda Heston, ihpatreasurer@gmail.com

Subject line: INVOICE IHPA.

Once you receive the email, you will be directed to an online payment page. Enter card info and click "Pay" to submit your payment. Once the payment has been processed you, and Rhonda will receive confirmation.

For office use: Pmt Rcvd _____ Check # _____ Amt _____ Letter of Donation_____

Please sign up to help at the IHPA Iowa State Fair Booth

Please return completed form to:

Heidi Love
18115 F Avenue
Perry, IA 50220

Name of Volunteers: _____

Address: _____ City: _____

State: _____ Zip _____ Phone no.: _____

Fair dates August 12-22, 2021

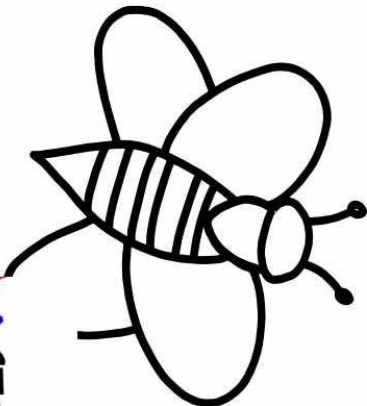
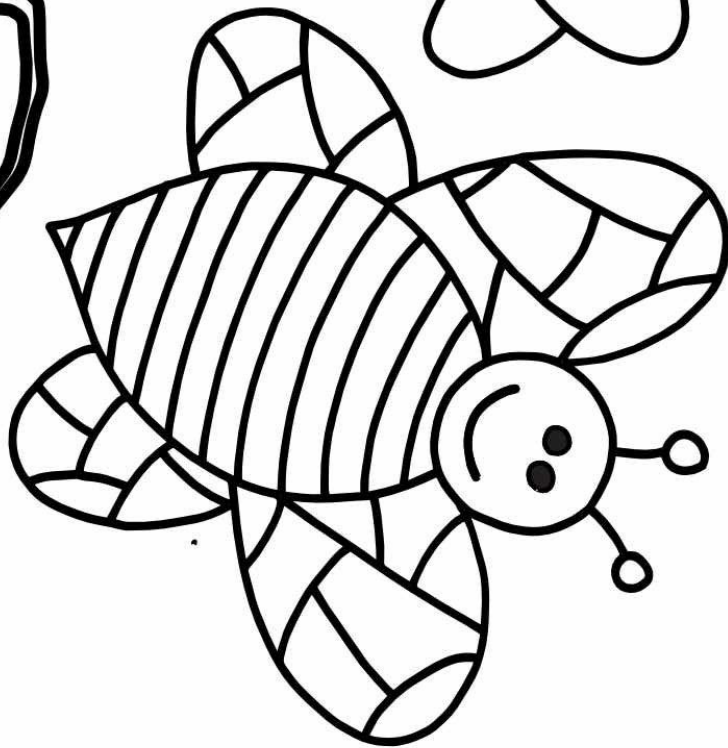
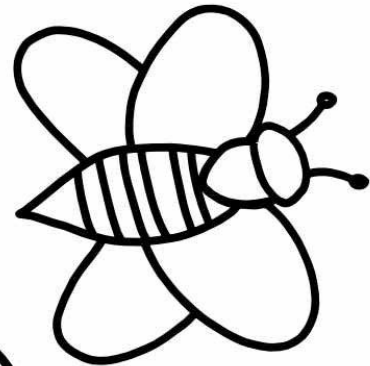
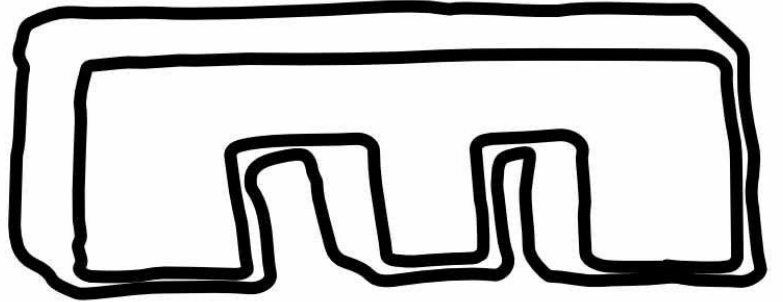
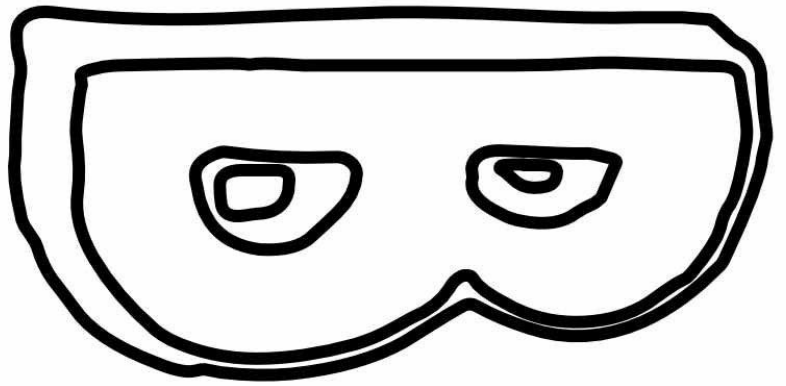
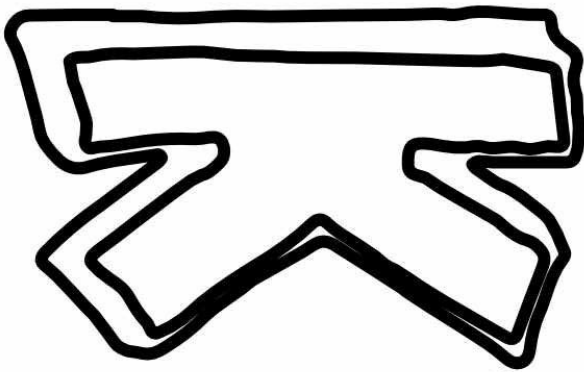
Please write the date(s) you would like to work and circle the shift time block that works best for you.

Date: _____ 9.00 am-1.30 pm 1.30 pm-6.00 pm 6.00 pm-9.00 pm

Date: _____ 9.00 am-1.30 pm 1.30 pm-6.00 pm 6.00 pm-9.00 pm

Date: _____ 9.00 am-1.30 pm 1.30 pm-6.00 pm 6.00 pm-9.00 pm

We appreciate any help you can provide!





The Buzz Newsletter

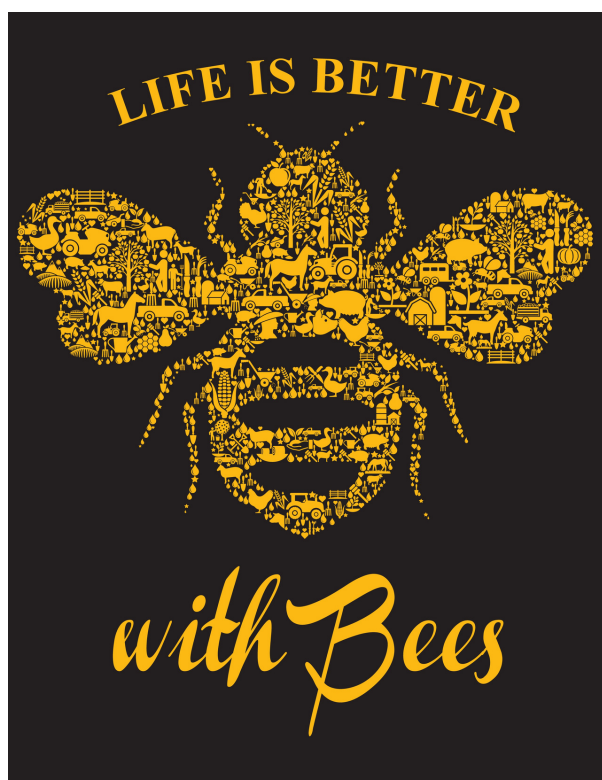
Iowa Honey Producers Association

52735 187th Avenue

Chariton, IA 50049



The Buzz is a monthly newsletter published by the Iowa Honey Producers Association which is an affiliate of the Iowa State Horticultural Society



Get your "Life is Better with Bees" apparel and accessories!!!

Men's Items:

- | | |
|-----------------------|---------|
| • T-shirt | \$15.00 |
| • Long Sleeve | \$20.00 |
| • Crewneck Sweatshirt | \$25.00 |
| • Hooded Sweatshirt | \$30.00 |

Women's Items:

- | | |
|-----------------------|---------|
| • T-shirt | \$15.00 |
| • T-shirt, V-Neck | \$15.00 |
| • Long Sleeve | \$20.00 |
| • Crewneck Sweatshirt | \$25.00 |

Accessories:

- | | |
|----------------------------|---------|
| • Apron | \$15.00 |
| • 30 oz. Stainless Tumbler | \$15.00 |

Go to shopihp.com to get yours today!