

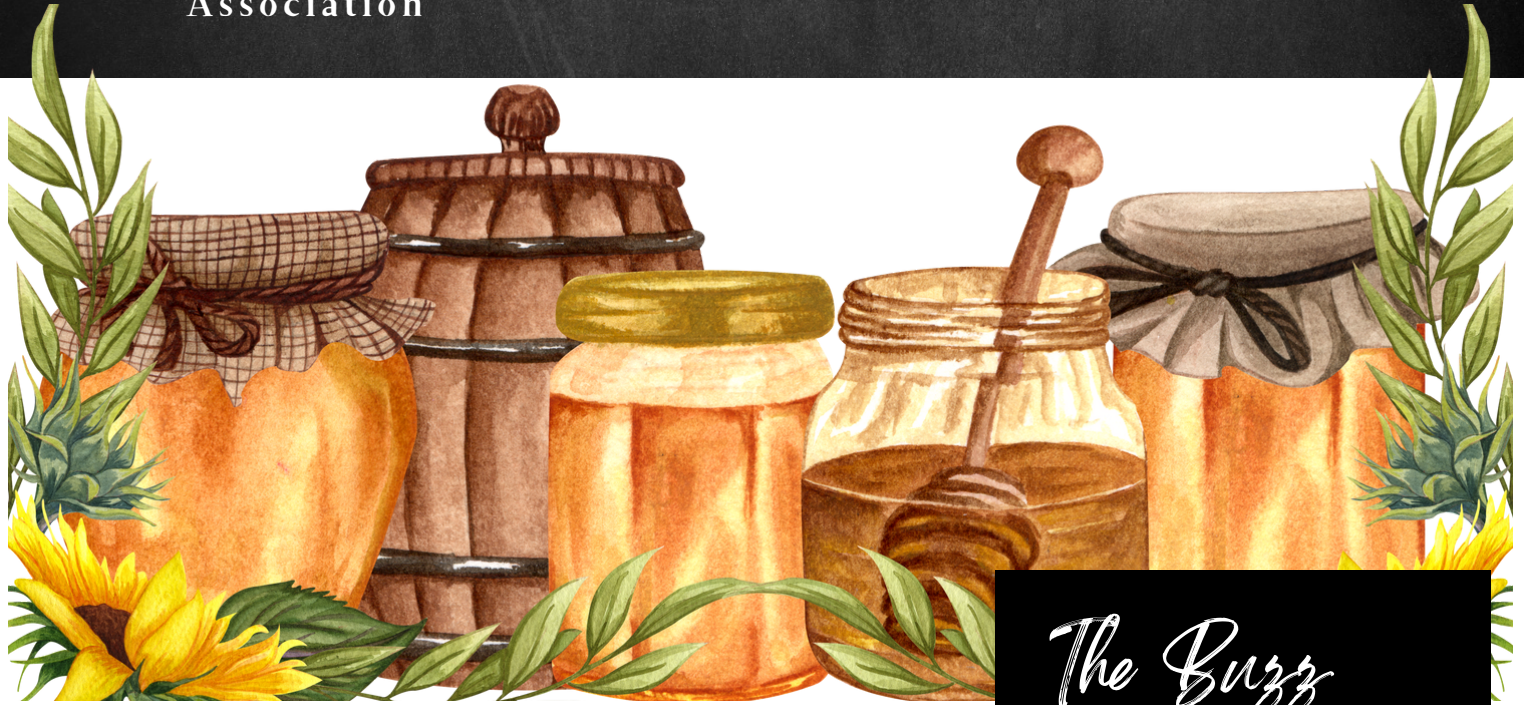
The Buzz



June 2023

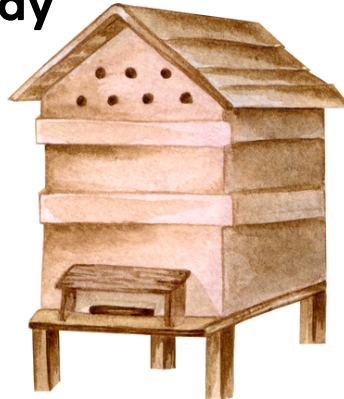
Newsletter of the
Iowa Honey Producers
Association

<https://www.iowahoneyproducers.org/>



Register for IHPA Field Day

A full lineup of speakers for Field Day + Registration can be found on pages 2-6



**IOWA
STATE
FAIR**

Iowa State Fair

Information about selling products at the Iowa State Fair can be found on pages 12-14

Apiary Exhibits

Find information about apiary exhibits on pages 15-17

august
10-20
2023

IowaStateFair NOTHING COMPARES

The Buzz

The Buzz is a monthly publication printed by the Iowa Honey Producers Association (IHPA). This is one of the many perks of being a member of the IHPA!



You may opt to receive an electronic version of The Buzz, as a donation to the IHPA. Please contact the editor at: ihpaeditor@gmail.com

Updates from your Iowa State Fair Committee

WE NEED YOUR HELP AT THE IOWA STATE FAIR BOOTH!

Dear Beekeepers,

I know it may be hard to start thinking about the State Fair, however Spring is here and the Iowa State Fair is fast approaching; August 10-20. For those members new to the Iowa Honey Producers Association (IHPA), we have a booth at the State Fair annually in the Ag building 2nd floor; selling honey products, honey lemonade, lotions, soaps, beeswax items, promotional merchandise, etc. This is our main fundraising event, which is needed to help support our various educational programs. We ask our members to help make this event a success, by volunteering their time assisting with cash register sales, bagging products, pricing, mixing and serving honey lemonade, offering honey samples, etc. Each volunteer will be provided with **free** honey lemonade if you get thirsty while working at the booth, also a **FREE** pass to get into the fair, plus you get to enjoy the great entertainment at the fair before/after your shift at the booth.

We had a successful 2022 thanks to all those who participated! Over the years we have had some wonderful people volunteer their time and would love to see you again. We encourage new members, friends, families and bee clubs to participate in this event too, because we need everyone's support to make this event a success.

We have three shifts daily, 8:30 a.m.-12:30 p.m., 12:30 p.m.-4:30 p.m. and 4:30 p.m.-8:30 p.m. (11-14 people are needed per shift). If you are able to volunteer for one or more shifts during August 10-20, we would like to hear from you. All you need to do is mail the completed tear off slip below, or email the same details to Heidi. If you have any questions, please do not hesitate to ask.

Heidi Love (IHPA Secretary) 18115 F Ave, Perry, IA 50220. Cell: 515-729-1761



First and Last Name(s) of Volunteers: _____

Address: _____

City: _____ State: _____ Zip _____

Phone no.: _____ Email address: _____ Number volunteering: _____

Please **write** the date(s) below you would like to work and **circle** shift that works best for you.
(Fair dates August 10-20)

We appreciate any help you can provide!

Date or Dates: _____

8:30 a.m.-12:30 p.m.

12.30 p.m.-4:30 p.m.

4:30 p.m.-8:30 p.m.

IHPA Officer & Director News

Ramblings from The Russian Bee Guy

President, Jason Foley

Hello and welcome to the June addition of The Buzz. It's with a heavy heart that I have to announce that our Bill HF457 (updated to bill 676), the bill to add honey bees to the list of non-taxed agricultural items; is dead for the rest of the year. Essentially we were told that a bill like this should have gotten started back at annual conference time of last year to not have fallen so low in the chronological order of bills being presented and voted on. Essentially there are just too many bills ahead of ours to be voted on in the limited time they had for this session. I can say we aren't going away. Just because it didn't work out this year doesn't mean we give up. If they want us to start tackling this in November, then that's just what your IHPA board will be doing. I'll probably do a little vlog on the IHPA facebook page about this as well for people who don't read the buzz. I do appologize about the redundancy.

Spring is here and the days are nice and toasty. Actually way toastier than I like, but the bees sure are soaking it up and in full swing. I personally would love it if temps were a high of 70 all summer long, but instead I get to look forward to 90's or worse *Yayyyeeryruh sad face*. I've seen some amazing shakes off of frames these last couple of weeks as I was spitting out colonies, and now I'm a bit panicked because I am seeing honey supers starting to get capped and it's only May 9th!!! I also keep hearing, "black locust will soon be blooming, get your supers on!" from my colleges. I'm going to get honey bound fast if that happens and I'm not ready.

This coming week I'm going to have to do a bit of a juggling act and I'm not looking forward to it. I have more of the special "drone source queens" arriving from members of the Russian Honey Bee Breeders Association that will need splits made for them. I also need to run out to some of my current yards and toss on more supers. We've fired up our queen rearing operations and I'll be thawing and drying out mini mating nucs this week from the walk-in freezer. Additionally I have yards to place, and yards of splits needing 2nd stories. Pretty much everything wants done at the same time. Ultimately it's my own fault because I had basically 3 weeks of package and nuc orders I ran all over the country for. One trip out to California and two trips down to Mississippi. I couldn't really do work during the week days because that is when all the running was happening, and then the weekends were full of servicing customers. My wife pointed out that I should have arranged to get all the Russian nucs at the same time as the packages so I didn't have to make a second trip (I did it that way because I was paranoid about the different temperture/air needs between the two). She also said that "it's silly you have a 10 to 12 day window of time every year that

people can come get their nucs. No one bats-an-eye at a weekend pick up of packages, why not a weekend pick up of nucs?" I guess she has a very valid point and I have created a lot of unnessasary work for myself. In my head it has always made sense that out of the 10 days everyone would likely come grab their orders right at 8am and then I could head off to the bee fields and such, wrong... It hasn't worked out that way the last however many years and I just never learn my lesson. For example, 5 people will schedule to come on a wednesday. Two of them will show up at 8am, another person tells me 9, another will say 9 but then shows up at 10:30 and the last person will ask for 11. Oops, half the day is gone and I instead of doing bee chores I have been sitting in the store. So for 2024 I will probably take my wife's wonderful advice (likely pretending that it was my own brilliant idea and refusing to admit that I have any recollection of her saying it the year before) and will distribute the Russian nucs and packages the same weekend in one fell swoop! Sometimes in life you get stuck in the things you do that it closes off one's perspective. Somehow it never ocured to me I could simply advertise ahead of time in the same manner as packages, and have it a two day window. Thank goodness I met that woman and convinced her to marry me.



Jason Foley
russianbeeguy@gmail.com
515-664-6072

IHPA Officer & Director News

In other news we just wrapped up the 2023 Spring Bee Camp hosted at Wesley Woods. This was our 2nd year of hosting this new supplemental program that supports our Youth Scholarship Program. I feel like our first year we were stumbling through things, and it also was really fresh and new for getting any IHPA member families to become involved. After this 2nd year I see where we could stand adding 1 or 2 additional classes into the line-up. Who knows, down the road if camp grows in popularity we could get more instructors and move to larger buildings at the camp. It could even become a full weekend event where kids show up Friday sometime and go until Sunday evening. All things that can be decided in the future as IHPA continues to evolve.

For those of you who don't know what Bee Camp is, it is the brain child of Andrew Joseph (state apiarist) and Jason Foley (me). It is designed to take a limited number of youth on an annual basis to an immersive bee education event over a 2 day period. We keep the numbers limited because we want the kids to be able to get individual attention and answers to all their questions. Yes, we know they have mentors and received free beginning beekeeping classes, but this allows the kids to basically review all that they have learned in an extensive hive inspection with lots of colonies kept on site at Wesley Woods (owned by Ted Reeves). Additionally, the kids go through various other classes that take their knowledge base to the next level. For example, they receive a comprehensive queen rearing class. Now, it has been criticized that so new of beekeepers aren't ready for a queen rearing class of any type or some of this higher education, but we kinda feel differently. Kids don't study geometry because they plan to become engineers, designers, craftsmen, etc... They do it to get a fundamental understanding of it that someday might apply to what they do end up doing. Same goes for some of these higher learning classes we are teaching the kids about. We're giving them an understanding of the materials so that in the future if they want to pursue that path, they already are 5 steps ahead of anyone starting out fresh. We're not trying to create temporary beekeepers, we're trying to give them the tools where this could be a real career path for them in life.



Jason Foley
russianbeeguy@gmail.com
515-664-6072

IHPA Program Leaders

IHPA Youth Scholarship Program

Youth Scholarship Coordinator, **Stephanie Meyers**

The IHPA Youth Scholarship Program encourages all beekeepers to reach out to youth ages 13 to 16 years old (by **November 1, 2023**) in your neighborhood, community, church, etc. and share about the program. Applications are currently being accepted for the 2024 year and must be postmarked by **September 15, 2023**.



Interested individuals should check out the IHPA website at <https://www.iowahoneyproducers.org/youth-scholarship-program>

for more information. Students accepted into the program will receive a complete hive, a package of bees with a queen, a feeder, a hive tool, a smoker, a bee brush, a hooded jacket/veil, a pair of leather gloves, a mentor for a year, a membership to the Iowa Honey Producers Association, free registration to Bee Camp, and free registration for annual conference.

I know it may seem early, but start chatting with youth in your area today! If you have any questions, please reach out to **Stephanie Meyers**, Youth Scholarship Coordinator by phone at 641-691-5036 or by email at sonshinefarmsia@gmail.com.

HELP WANTED: The National Association of State Departments of Agriculture, (NASDA) working with USDA is hiring FIELD STAFF. Work is part time collection data for the USDA/NASS. A farm background is preferred. Qualifications - a good work ethic, a self-starter, and good communications skills. Starting wage is \$16.31/hr. Mileage allowance is 65.5 cents. Find more info at NASDA.org. For more information call Tony at 515-802-8367

This year the wife & I are sad to say but we are selling out of the bees. Our jobs are taking away from the bees. We have 8 frame hives. We have some that are built & some that are bought from Dadant & Mann Lake. There is too much to list-if you're interested please call or text me at (319) 572-2012. Wanting to sell all together not piece it out. Have supers, hives, hive stands. Thank you. [Eric Higdon, Mediapolis, IA]



Foley's Russian Bees

Foley's Russian Bees is an Indianola, Iowa based producer of Primorsky Russian bees & beekeeping equipment. We specialize in Russian mated queens and Russian nucleus hives. We also are a provider of Carniolan packages. When you are in need of bees, we can help!

To place an order, check us out on the web
www.RussianBee.com

From the Editor

Kelsey Wigans, IHPA Editor

**Gilmore City-Bradgate Elementary Seed to Table Manager
Iowa Conservation Education Coalition Teacher of the Year 2022
Humboldt County Conservation Teacher of the Year 2022**



Hello Fellow Beekeepers!

We made six walk away splits, and we are excited to check them around May 24 to see if we have bred, laying queens! We'll keep you up to date on the happenings there. Did you know that the Bell Farm has a bunch of really great free tools, like a Walk Away Split Calculator, Grafting Date Calculator, Post-Swarm Date Calculator, Queen Cell Date Calculator and Syrup Calculator! Check them out here:

<https://www.bellfarmiowa.com/tools>

In the bee yard at school our other hives seem to be suffering from some pesticide application by the neighbors, stating, "I didn't spray the bees."

That's great you didn't spray the bees in my five and half foot tall fenced in area, but when you spray your flowering weeds about 25 feet from their homes...well...they aren't going to fair so well. So, I suppose this is a time for you to learn from my mistake. The just goes to show the importance of educating others the about the best times of day to spray on an **annual** basis. Just because they remembered last year, doesn't mean the same for this year.

I'm not sure if they'll come through or not. Updates coming next month!

In other news. Two third grade students that really know their bee stuff joined me at the annual Davis Dairy Tour in Humboldt County. The Davis Dairy tour has been ongoing for 15 years, and has between 400-500 students yearly. Not only do they showcase everything dairy, but they open the doors to other livestock ventures, including, but not limited to alpacas and llamas, sheep, goats, pigs, horses, emu, and now BEES!



Iowa Honey Royalty



Rachel Vakulich - 2023 Iowa Honey Queen

Hello Fellow Beekeepers,

It has been quite the month of May! I have been way too busy catching swarms that were two weeks early! I will write about my months as queen but that will be saved for the July BUZZ.

I was asked to write about the Iowa Honey Queen Program. Abigail Kelly and Allison Hager have left very big shoes for me to fill since I became the Iowa Honey Queen. This year we have the Iowa Honey Queen and the Iowa Honey Princess. Together, we get to travel the state of Iowa and talk about honey and beekeeping.

The Iowa Honey Queen is the state's representative for the beekeeping industry. The promotion of honey consumption, taking care of honeybees, and advocacy for the beekeeping industry are some of the ways that the Iowa Honey Queen fulfills her role. Promoting honey can come in a variety of different ways. Visiting farmers markets, passing out honey sticks, and even talking to people about how to use honey are examples of ways that the Iowa Honey Queen has promoted honey itself.

Education plays a big role as the Iowa Honey Queen is invited to speak about honeybees and honey. Presentations about beekeeping are popular in schools while a lady's club may want to know how to use the honey in their cooking. Knowing how to do those different presentations and tailor them to the age group and occasion can help any queen. Public speaking can be learned and is very necessary when doing presentations or even talking with the public. There are many misconceptions that the public think that honeybees do. "Bees have stung me multiple times" or "When I lost power, I threw away everything that was in my fridge, including the honey" are the different things that I personally have heard. Teaching different age groups can be challenging but very rewarding as you could teach whole families about honeybees and have everyone's attention.

Another duty that the Iowa Honey Queen has is to write articles for the BUZZ.



Queen Rachel showcasing honey products

This is a way to help the beekeepers know what she has been up to. It also gives a bit of timeline for the queen for when she presents at the Queen Luncheon at the IHPA conference in November.

Media is something else that the Iowa Honey Queen should know about. TV and radio interviews may come at a moment's notice. Being comfortable and natural during the interview is really helpful because many may remember that interview because the queen was not visibly nervous. Social media is key to reaching a larger audience on your own. The Iowa Honey Queen Facebook page allows the queen to post about the events that she has done or interesting facts about honeybees. It can really be whatever the Iowa Honey Queen wants as long as it is professional and related to honeybees.



2022 IHPA Honey Queen, Allison Hager, interviewing on the radio

There is a scrapbook that the Iowa Honey Queen is to do. It shows off her year as the honey queen and some of the things that she was able to do. If you were at the IHPA Conference last November, you would have been able to see Britta's, Allison's, and my scrapbooks. It is a nice thing to look back on and see all the things that you have done and to show family and friends.

Iowa Honey Royalty



Rachel Vakulich - 2023 Iowa Honey Queen

Another thing that most people do not think about is the brochure. The Iowa Honey Queen and Princess brochures are made by the Iowa Honey Queen and Princess. It takes some time to think about honey recipes, write the biographies, and design the brochure. Thankfully, Jason Foley (the IHPA President) was happy to help us out with this. Being creative with the brochure helps make it attractive and allows people to pick one for themselves.

Now, if there is a young man who would like to be the Iowa Honey Ambassador, I would love to see that. Central Iowa Beekeepers Association had a Honey Ambassador, and he did a phenomenal job at that. So do not think that this position is only for the girls, there have been some good young men who have done great in their roles.



2017 Iowa Honey Queen, Carly Raye Vannoy



Britta McCollum, 2022 Iowa Honey Princess



Beekeepers, Queens and Ambassador at the Iowa State Fair Parade

I hope that this helps some of you who are thinking about being the Iowa Honey Queen, Princess, or Ambassador. Next month, I will continue this by writing about the application process, the competition, and some tips that you might want to know about. If you have any questions, please reach out to Connie Bronnenberg. You could also send me a message through Facebook or let Connie know that you want to speak with me. Former Iowa Honey Queens have a wealth of knowledge and may be able to answer the questions better than I can.

If you have any events like county fairs, farmers markets, or even beekeeping events that you would like the Iowa Honey Queen or Princess to attend, please contact Connie Bronnenberg. We would be happy to come to your event.

Happy Beekeeping,

Rachel Vakulich
2023 Iowa Honey Queen

Meet more of the IHPA Team

Tim Olsen - The Buzz Team

Rev. Tim Olsen (Tim). I recently retired as the Executive Director of the nonprofit, Ground Works/SD Agriculture in the Classroom, headquartered in Sioux Falls. Currently, I work as the Upper Midwest Coordinator for the national ministry, Evangelical Environmental Network (EEN). The priority of my work is coordinating meetings with agriculture and church leaders living in Iowa, Minnesota, and South Dakota to gather testimony of recommendations for the conservation section of the 2023 Federal Farm Bill. My side hustle is Laughing Eyes Apiary. IHPA members can provide me with insight into what beekeepers of all skill levels want to learn to improve their bee management practices.



Photo credit: Rock County Star Herald Luverne, MN

More on Tim on page 19, in the section titled, "Chicken Scratch"



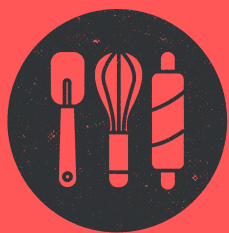
Abigail Kelly - Event Committee

Abigail Kelly, Dassel Acres in Des Moines

I serve on the Event Committee.

I am very new to this committee and just getting my toes wet, but I'm excited to help continue to make IHPA events the best they can be! I'm always open to input and thoughts.

The best way to contact me is by email: dasselacres@gmail.com



Recipes by Emma Ingram

Happy June! My how the spring flew by! The dandelions are now mostly gone and the bees are well established for the summer! As the summer routines get underway and school lets out for most of us, I thought I would try a fast, fun, family-friendly treat that could be brought along to baseball practice or enjoyed as a light lunch. This month, I tried stuffed honey-ham biscuits. Although a little unusual for me, these would be a fun treat to make with the kids and enjoy fresh out of the oven a few minutes later.

Stuffed Honey-Ham Biscuits (Pg. 58):

1 can Pillsbury Grands Flaky Layers refrigerated biscuits
8 slices Swiss Cheese 8 slices Deli Cooked ham
1/4 cup honey



Heat oven to 350 degrees. Spray cookie sheet with cooking spray. Separate dough into 8 biscuits. Cut slit on 1 side of 1 biscuit, forming a deep pocket. Place 1 slice of cheese inside pocket, Top cheese with 1 slice of ham and 1 teaspoon honey. Press dough over filling, sealing edge of biscuit; place on cookie sheet. Repeat with remaining biscuits, cheese, ham, and honey. Bake for 15 minutes or until golden brown. Remove from cookie sheet to serving plate. Drizzle with remaining honey over the tops. Serve immediately.

Emma's Notes: Yummy! That is the best word to describe these biscuits. There were so many layers of flavor inside and outside the biscuit and the honey drizzle over top got just a tiny bit caramelized before we ate them so they were extra tasty. For the cheese, I used the pre-cut cheese slices for sandwiches and just broke the pieces in half to be the right size. That worked really well and made the pieces just right. Getting the honey in the middle without spilling everywhere and getting the cut sealed was a little messy, but well worth the effort. To do the slit, I started by cutting the dough sandwich style but that did not work well. I tried opening up just the center (think like a cream filled donut), this worked much better! Nearly all of the biscuit remained shut and I was able to fill it without spilling anything much more easily. They were not super filling so we each had two, but with a nice side, one would have been plenty. Overall, we really enjoyed these and they were just as good the second day!

Chicken Scratch



This section of The Buzz is dedicated to helping YOU learn how to be a better beekeeper.
So, get out your notebook, and take some notes.
You're going to want to write this down.

A bit more about Tim Olsen-continued from page 9

I'm currently working part-time for the Evangelical Environmental Network (EEN) - creationcare.org. My focus is on the conservation section of the 2023 Farm Bill. BTW, I wrote a blog for the EEN website recognizing World Bee Day - bit.ly/worldbeeday2023

My work with EEN and the Farm Bill has introduced me to the principles and practice of soil health and regenerative agriculture. This introduction has triggered an idea for the Healthy Garden Initiative (HGI) - Healthy Soil-Healthy Plants-Healthy Food-Healthy People. HGI mission will be to promote the principles and practice of healthy soils and Integrated Pest Management (IPM) for small scale food production such as backyards, community gardens, school gardens, etc.

RULES FOR 2023 STATE FAIR PRODUCTS BEING SOLD AT THE IHPA BOOTH

1. There will be a **3-Person** committee including the booth manager.
2. Applications must be sent by email to all **3 committee** members: Kris Silvers Kristin.silvers@gmail.com, Heidi Love ihpasecretary@gmail.com, and Carole Vannoy iowabeekeepinghistory@gmail.com
3. A copy of Application shall be sent by USPS (United States Postal Service) to Kris Silvers; 2088 310th Ave. Woodburn, Iowa 50275
4. **Firm cutoff date of June 10, 2023 (must be postmarked by this date)**
5. The committee will meet on **June 17, 2023** Place to be determined. The meeting will be held in a predetermined neutral place. The general IHPA membership will be allowed to witness. Watch facebook and website for location
6. All comb honey is to be from **2023** harvest.
7. All glass honey containers and creamed honey containers must have a protection seal.
8. All plastic honey containers must have a pressure seal. (This includes all large containers)
9. All products must show proper labeling (Supplier, name, city, phone #)
10. Any item **not listed** on the application sheet or any specialty items you wish to market at the IHPA State Fair Booth needs to be approved by the booth manager by the committee deadline. (**June 10, 2023**)
11. **ALL CONTAINERS NEED TO BE CLEAN, NON STICKY; AND ARE SUBJECT TO REJECTION BY BOOTH MANAGER.**
12. Honey for the Honey Lemonade (50-pound buckets) will be a sealed bid only. Low bid takes it all.
13. Pollen must have a "US Pollen" label
14. **Due to the time frame of honey styx production it will be a one year commitment starting 2024.**
15. **ALL HONEY MUST BE FROM IOWA HARVEST**
16. One application per household. Must be current IHPA member.
17. **All Bid winners are required to work two shifts at the fair booth (or have someone work for you)**
18. These rules will be reviewed by the Iowa State Fair Bid Committee annually.

SOLE CLASSES:

- 1) There will be one person that will have a sole class of honey or item based on price list. For example: one person will have ALL 24 oz. bears for the state fair based on price list. If 2 or more producers apply for that item, it will be decided by a draw, winner will take the whole class.
- 2) You will only be allowed to win every other draw, however if you are the only one that entered that class you will get the class and be eligible for the next draw.
- 3) Draw order is per list on application sheet
- 4) If you win any sole class you ARE NOT eligible for case lots, however, if you are not chosen in the draw for any of the sole classes, you will be eligible for case lots but you must have it on your application sheet if you are wanting to supply those.

OPEN CLASSES:

- 1) All beeswax products (candles, ornaments, blocks, soaps, lotions, lip balms etc.) must be packaged to maintain cleanliness and for presentation. (This will be the booth managers discretion)
- 2) Please submit a list of what you would like to market at the Iowa State Fair for 2022. Please provide a phone number where you may be reached if committee has questions.
- 3) You are only allowed to supply a maximum of 4 scents of each product.

CREAMED AND FLAVORED HONEY RULES: MUST BE IOWA HONEY:

- 1) Flavored honey and creamed honey must come from a certified kitchen.

- 2) A copy of the license must be on file with the booth manager and booth manager must have them with them at the state fair. **(License must be attached and mailed with application package)**
- 3) If more than one person is wanting to bring a flavor, a draw will decide who brings the flavor.
- 4) You are required to provide a 1 once sample, by committee deadline, if you wish to bring pure creamed honey. (MUST HAVE SAMPLE TO **KRIS SILVERS BY NOON ON JUNE 17, 2023**)

CASE LOTS:

- 1) The purpose of the case lots is a way for the small beekeeper to provide honey to the fair.
- 2) Case lot classes are 1-pound glass, 1-pound plastic and the 12-ounce bear, and 8-ounce Bear
- 3) Case lots will be in case quantities of 24 bottles
- 4) You may bring no more than 4 cases of each class.
- 5) Minimum is one case of 24 for a class.
- 6) If you do not win any of the ‘Sole Class’ categories then you will be eligible for case lot. (This must be marked on your application to be considered)
- 7) Clean up rule: In the event the required quantity cannot be fulfilled through the case lot system, those participating in the “sole class” will be encouraged to help supply the additional quantity needed of each class through a draw. (One person per class decided by draw if needed.) These items will not be placed out until after majority of case lots are sold.

CUT COMB, ROSS ROUNDS and CHUNK HONEY:

- 1) Must be in a sealed container
- 2) Must be well-drained without liquid honey(Chunk honey excluded)
- 3) Quality standards will be used (clean capping with all the cells capped)
- 4) Needs to weigh at least 14-ounces(Chunk honey excluded)
- 5) MUST be frozen for a minimum of 48 hours prior to arriving at the Iowa State Fair, subject to rejection, booth manager’s discretion. (Chunk honey will need to be frozen as well.)

DELIVERY OF PRODUCTS:

- 1) All products must be delivered to IHPA booth at the Iowa State Fair
- 2) Product must be delivered between Sunday to Tuesday hours are as follows: Sunday Noon-6PM, Monday 10AM-6PM, Tuesday 10AM-6PM (unless other arrangements are made with the booth manager)
- 3) **YOU MUST PROVIDE AN INVOICE WHEN PRODUCT DELIVERED AND EVERYONE MUST HAVE COMPLETED A W-9. (W-9 will be provided on site if we need one from you.)**
- 4) Please make plans to pick up unsold product on Sunday evening 9PM-10PM or Monday between 8AM-NOON. (unless other arrangements are made with booth manager)

**IOWA
STATE
FAIR**



Mark your calendars
& things to be thinking about

- Could I volunteer to walk in the Iowa State Fair Parade on August 9? (See page 22)
- What days can I volunteer for the IHPA booth? (See page 2)
- What apiary entries would I like to submit? (See pages 15-17)
- What are the deadlines for apiary projects? (See pages 15-17)

HONEY - SOLE CLASS						CERTIFIED KITCHEN - SOLE CLASS					
		Amount Sold in 2021	Amount Sold in 2022	PRICE	I want this	15.00		Amount Sold in 2021	Amount Sold in 2022	PRICE	I want this class
						15.01	Almond	37	61	\$ 7.05	
1.00	24 ounce bear	168	252	\$ 6.33		15.02	Apple Cinnamon	126	224	\$ 7.05	
2.00	3 pound jug	45	72	\$ 11.55		15.03	Maple Bacon	24	27	\$ 7.05	
4.00	2 pound jug	69	72	\$ 9.35		15.04	Bavarian Crème	221	233	\$ 7.05	
5.00	5 pound jug	32	38	\$ 17.60		15.05	Black Walnut	52	81	\$ 7.05	
6.00	2 ounce bear	252	451	\$ 1.38		15.06	Blackberry	128	108	\$ 7.05	
7.00	16 ounce Antique (Muth) jar	52	108	\$ 7.15		15.07	Blueberry	96	108	\$ 7.05	
8.00	8 ounce Antique (Muth) jar	39	39	\$ 4.68		15.08	Cinnamon	283	266	\$ 7.05	
9.00	4 ounce Antique (Muth) jar	54	72	\$ 3.30		15.09	Jalapeno	72	65	\$ 7.05	
10.00	Buckwheat Honey 1 pound	0		\$ 6.60		15.10	Lemon	84	140	\$ 7.05	
11.00	12 pound gallon jug	13	18	\$ 38.50		15.11	Mango Habanero	128	128	\$ 7.05	
12.00	Honey Stix-For the year 2024	31528	28122	\$ 0.15		15.12	Mango Tangerine	66	95	\$ 7.05	
HONEY - CASE LOT - 24 PER CASE						15.13	Pecan	72	134	\$ 7.05	
		Amount Sold in 2021	Amount Sold in 2022	PRICE	Limit 4 cases per class	15.14	Chocolate Mint	0	64	\$ 7.05	
71.00	1 pound glass (liquid honey)	125	79	\$ 5.78		15.15	Pure	307	384	\$ 7.05	
72.00	1 pound plastic (light honey)	136	152	\$ 5.50		15.16	Raspberry	74	128	\$ 7.05	
73.00	12 oz honey bear (light honey)	140	208	\$ 4.40		15.17	Raspberry Jalapeño	154	160	\$ 7.05	
74.00	8 oz honey bear (light honey)	136	96	\$ 3.30		15.18	Strawberry	88	79	\$ 7.05	
						<i>Additional Flavors:</i>					
CLEAN-UP							Apricot	21	56	\$ 7.05	
77.00	8 oz honey bear		45				Butter Vanilla	87	58	\$ 7.05	
78.00	1 pound glass		1				Chai	48	46	\$ 7.05	
79.00	1 pound plastic						Orange	64	43	\$ 7.05	
80.00	12 ounce honey bear						Cranberry/orange		96	\$ 7.05	
							Honey Apple butter	98	56	\$ 5.50	
SPECIALTY ITEMS						SPECIALTY ITEMS					
		Amount Sold in 2021	Amount Sold in 2022	PRICE		14.00	Infused honey-Garlic		29	\$ 7.50	
75.00	Comb Honey (Clamshells & Boxes)	743	782	\$ 9.00		14.01	Infused honey-Chili Pepper		30	\$ 7.50	
76.00	Ross Rounds			\$ 6.00		14.02	Infused honey-Lavender		28	\$ 7.50	
81.00	Chunk Honey - 12 oz	174	120	\$ 8.00		16.00	Whisky Barrel Aged-11 oz		206	\$ 12.00	
69.00	Bee Pollen (1/2 pound)	58	52	\$ 6.00		16.01	Whisky Barrel Aged-19 oz		60	\$ 15.60	
70.00	Bee Pollen (1 pound)	40	28	\$ 11.00		16.02	Rum Barrel Aged-12 oz		137	\$ 12.00	
						16.03	Rum Barrel Aged-25 oz		19	\$ 21.00	
Honey for Lemonade						BEESWAX PRODUCTS - OPEN CLASS					
		Amount Sold in 2021	Amount Sold in 2022					Amount Sold in 2021	Amount Sold in 2022	PRICE	I want this class
						16	Beeswax Bar - 1 ounce	35	56	\$ 2.00	
82.00	Honey for Lemonade - 50 pound	2368.4	2200			17	Beeswax Bar - 1/2 pound	17	18	\$ 4.00	
						18	Beeswax Bar - 1 pound	12	18	\$ 7.00	
						51	Wooden Honey Dippers	99	48	\$ 1.75	
CERTIFIED KITCHEN - SOLE CLASS						53	Corn cob candle	18		\$ 5.50	
13.00	Flavored Honey- 8oz	Amount Sold in 2021	Amount Sold in 2022	PRICE	I want this class	54	12" pair dinner candles	14		\$ 6.00	
13.01	Chai	29	18	\$ 5.00		55	8" pair dinner candles	7		\$ 5.00	
13.02	Apple Cinnamon	94	100	\$ 5.00		56	Small skep w/bear candle	18	24	\$ 3.00	
13.03	Butter Vanilla	37	42	\$ 5.00		57	Tea lights (12 pack) candle	7	24	\$ 6.00	
13.04	Black Cherry	73	57	\$ 5.00		59	Pillar 6" rolled look candle	5		\$ 5.50	
13.05	Blackberry	70	43	\$ 5.00							
13.06	Blueberry	75	34	\$ 5.00		61	Votive (4 pack) candle	2		\$ 5.00	
13.07	Butter Rum	99	75	\$ 5.00		68	Fire Starter /5 pk	12	29	\$ 1.50	
13.08	Butterscotch	0		\$ 5.00			Owl Candle	28	29	\$ 1.75	
13.09	Carmel Apple	49	40	\$ 5.00			Rose Pillar	3			
13.10	Cherry	0	31	\$ 5.00			Turtle Candle	55	45	\$ 1.75	
13.11	Chocolate Mint	0	34	\$ 5.00			Large Morel Mushroom	32	48	\$ 4.00	
13.12	Cinnamon	44	44	\$ 5.00			Small Morel Mushroom	37	48	\$ 1.75	
13.13	CranRaspberry	46		\$ 5.00			Pumpkin Candle	6	5	\$ 10.00	
13.14	Jalapeno	26	27	\$ 5.00			Gnome Candle	7	13	\$ 6.00	
13.15	Lemon	65	50	\$ 5.00			Elephant Candle	17	13	\$ 5.00	
13.16	Orange	43	25	\$ 5.00			Wood Pillar Candle	12	14	\$ 10.00	
13.17	Peach	100	56	\$ 5.00			Hedgehog	0	19	\$ 3.00	
13.18	Peach-Mango	0	39	\$ 5.00			Evergree Pillar		12	\$ 8.00	
13.19	Habnero	79		\$ 5.00			small pinecone		5	\$ 3.00	
13.20	Raspberry	100	71	\$ 5.00			Dog		28	\$ 6.00	
13.21	Strawberry	94	71	\$ 5.00			duck		11	\$ 4.00	
	<i>Additional Flavors:</i>						rooster		12	\$ 5.00	
							laying hen		7	\$ 6.00	
							chicken		2	\$ 6.00	

APIARY - BEES AND HONEY

Agriculture Building, Upper Level

Superintendent - Andy Joseph, Des Moines

Apiary exhibits will be open to the public during building hours each day of the Fair.

If you have questions, please contact the Iowa State Fair Entry Department at 515-282-3111 ext. 243 or entryintern1@iowastatefair.org.

RULES

1. Iowa Family Living general rules and regulations apply in this department. In case general rules conflict with Apiary Department general or special rules, the latter shall govern.
2. **SUBMITTING ENTRIES.** Entries may be made online at www.iowastatefaireentry.org. Entries may also be made by printing the Iowa Family Living form available at www.iowastatefair.org. Complete entry form and return it with full payment of all fees to: Iowa State Fair, Iowa Family Living Entry Department, PO Box 57130, Des Moines, IA 50317-0003.
3. **ENTRY DEADLINE IS JULY 14.** Entries must be submitted online or postmarked on or before July 14. **NO LATE ENTRIES ACCEPTED.**
4. **ENTRY FEE.** Each exhibitor, as a requirement for entry, shall pay a fee of \$2 per entry. This fee applies in all classes except Limited Class 21 which is \$4.

ENTRY ELIGIBILITY

5. Exhibitors are limited to one entry in each class.
6. All honey and beeswax exhibits must be the product of the exhibitor's apiary and must be prepared by the exhibitor unless otherwise specified. Please check class description for eligibility.
7. Entries are to be submitted by a living individual, not by a business, club or organization.
8. A sticker with exhibitor's number must be attached to each container or exhibit (on lid when possible).
9. In all classes, adult and youth, items submitted must not have any reference to the exhibitor. This includes exhibitor's name, company name and/or logo. Any items so identified will be disqualified and will be on display only after judging is completed and if space is available. All containers must be unlabeled. Beekeeper's label may be applied only after judging.
10. Points will be deducted for entries with less than the specified amount.
11. Entries in the Beekeeping Photo Classes must have been taken by the exhibitor.
12. Exhibitors must provide bees in observation beehives with adequate ventilation and an exit hole, 1¼ inch in diameter with ball valve, located just above the bottom board on one end, so that it can be connected to the outdoors and a ¾ inch thick hive base 1 inch wider (not longer) than the hive so that it can be secured to the table with screws.
13. A youth (exhibitors 18 years and under as of the day of judging) can enter an Adult Class only if there is not a comparable class for youth. If there is a Youth Class available, youth must submit their entries in the appropriate Youth Class. This includes Class 23: Youth - Three 1 lb. Queenline or Classic Jars of extracted honey instead of Adult Classes 4, 5, 6 and 7; Class 24: Youth - Beekeeping Photo instead of Adult Classes 16 and 17; Class 25: Youth - Two Beeswax Candles instead of Adult Class 19; Class 26: Youth - Three 12 oz. Plastic Bears instead of Adult Class 9; Class 27: Youth - One Frame of Honey sealed, ready for extracting, wrapped in clear plastic wrap instead of Adult Class 12 and Class 28: Youth - One Frame of empty extracting comb wrapped in clear plastic wrap instead of Adult Class 13.

DELIVERY OF ENTRIES

14. Exhibits must be in place by Noon on Wednesday, August 9 and remain in place until 8:00 p.m. on Sunday, August 20. Exhibits may be brought in between 1:00 p.m. and 6:00 p.m. on Sunday, August 6; between 6:00 p.m. and 8:00 p.m. on Tuesday, August 8 and between 8:00 a.m. and Noon on Wednesday, August 9. Exhibits must be in place by Noon on Wednesday, August 9. You will need a Pre-Fair Pass (request on entry form) to bring your vehicle onto the Fairgrounds to drop off your exhibit(s).
15. Observation hives must be in place by 11:00 a.m. on Wednesday, August 9. Hives will be inspected by a State inspector prior to judging. Any hives not inspected at this time will not be allowed to be displayed and must be removed from the building. Limited to the first 12 entries.

JUDGING

16. Exhibits will be judged Wednesday, August 9 and/or Thursday, August 10. Entries not in place by Noon on Wednesday, August 9 will not be judged. Exhibits brought in after Noon on Wednesday, August 9 will be considered for display only, but will not be guaranteed display space.
17. Any entry may be withheld at the discretion of the judge or the Superintendent.
18. Any entry may be disqualified if it does not comply with the classification.

DISPLAY OF ENTRIES

19. The arrangements of exhibits will be directed by the Superintendent and will be classified whenever possible. Jack's Scale will be used in Classes 4, 5, 6 and 7 for color placement.

SALE OF ENTRIES

20. Apiary products cannot be sold during the Fair.

RECLAIMING ENTRIES

21. Entries must be picked up between Noon and 6:00 p.m. on Monday, August 21.

LIABILITY

22. The Management will use diligence in caring for the safety of entries after their arrival and placement, but in no case will they be responsible for any loss or damage that may occur.

BEEES, APIARY PRODUCTS

Premiums in Classes 1 through 20 - \$20, 15, 12

Premiums in Class 21 - \$40, 30, 25

Premium in Class 22 - \$20

CLASS

- 1 **Observation Hive of Bees and Queen - Any Race - 1 ½ story, deep brood comb with medium or shallow frame or sections on top**
- | | | |
|--|--|------------|
| | Score Card | |
| | Uniformity of Color & Markings for Breed | 15 |
| | All Stages of Worker Brood..... | 15 |
| | QUEEN: | |
| | Size and Shape | 15 |
| | Color and General Appearance | 15 |
| | HIVE: | |
| | Brood Comb Attachment, and Frame of Honey..... | 15 |
| | Overall General Appearance | 25 |
| | TOTAL..... | 100 |
- 2 **Six Round Sections - White Comb Honey**
 Score Card - Cleanliness of sections (plastic) 10; comb attachment to section, 20; CAPPING: uniformity of color and finish, 30; no stain and absence of pollen, 10; honey color, 10; moisture content, 20. TOTAL 100.
- 3 **Six Cut Comb in Hard Plastic Box, 4 1/2 inches x 1 1/8 inches**
 Score Card - Accuracy and neatness of cut edges of comb, 20; uniform depth and filling of honey cell, 20; complete, uniform and clean cappings, 20; quality, quantity and uniformity of honey, 20; freedom from leakage and general appearance of pack, 20. TOTAL 100.
 Jack's Scale will be used for color placement in Classes 4, 5, 6 and 7.
- 4 **Six 1 lb. Glass Queenline or Classic Jars White Extracted Honey**
 Score Card - Container: free of defects, 5; flavor: free from burnt taste, chemical contaminants or other off flavors, 15; color of honey, 15; moisture content, 20; uniform volume of honey in all containers, 10; clarity of honey, 15; freedom from impurities, including foam and granulation, 20. TOTAL 100.
- 5 **Six 1 lb. Glass Queenline or Classic Jars Light Amber Extracted Honey**
 Score Card - Container: free of defects, 5; flavor: free from burnt taste, chemical contaminants or other off flavors, 15; color of honey, 15; moisture content, 20; uniform volume of honey in all containers, 10; clarity of honey, 15; freedom from impurities, including foam and granulation, 20. TOTAL 100.
- 6 **Six 1 lb. Glass Queenline or Classic Jars Amber Extracted Honey**
 Score Card - Container: free of defects, 5; flavor: free from burnt taste, chemical contaminants or other off flavors, 15; color of honey, 15; moisture content, 20; uniform volume of honey in all containers, 10; clarity of honey, 15; freedom from impurities, including foam and granulation, 20. TOTAL 100.
- 7 **Six 1 lb. Glass Queenline or Classic Jars Dark Amber Extracted Honey**
 Score Card - Container: free of defects, 5; flavor: free from burnt taste, chemical contaminants or other off flavors, 15; color of honey, 15; moisture content, 20; uniform volume of honey in all containers, 10; clarity of honey, 15; freedom from impurities, including foam and granulation, 20. TOTAL 100.
- 8 **Three 2 1/2 lb. Square Wide Mouth One Piece Lid Jars Combination Chunk and Strained Honey**
 Score Card - Container: free of defects, 5; cleanliness and general appearance, 20; freedom from impurities, including foam and granulation, 20; flavor: free from burnt taste, chemical contaminants or other off flavors, 5; moisture content, 20; quality and neatness of comb honey, 25; uniform volume of honey in all containers, 5. TOTAL 100.
- 9 **Six 12 oz. Plastic Bears**
 Score Card - Container: free from defects, 5; flavor: free from burnt taste, chemical contaminants or other off flavors, 10; color of honey, 20; moisture content, 20; uniform volume of honey in all containers, 15; clarity of honey, 15; freedom from impurities including foam and granulation, 15. TOTAL 100.
 Class 10 and 11 - Plain lids only. Lids must not be decorated.
- 10 **Six 12 oz. Hex Jars Creamed Honey (A pure honey developed by controlling the process of natural granulation. Noted for its fine texture and ease of spreading at normal room temperature.)**
 Score Card - Container: free of defects, 5; color, 10; firmness (not runny but spreadable), 25; texture of granulation (smooth and fine), 20; uniform and accurate volume of honey in all containers, 10; absence of impurities, including froth, 15; flavor: free from burnt taste or other off flavors, 15. TOTAL 100.
- 11 **Six 12 oz. Hex Jars Flavored Creamed Honey with the Flavor Specified on the Container Lid**
 Score Card - Container: free of defects, 5; color and appearance, 10; flavor, 25; firmness (not runny but spreadable) 20; texture of granulation (smooth and fine), 20; absence of impurities, including froth, 10; uniform and accurate volume of honey in all containers, 10. TOTAL 100.
- 12 **One Frame of Honey, sealed, ready for extracting, wrapped in clear plastic wrap**
 Score Card - Cleanliness of frame, 5; completeness of comb attachment, 10; uniform and completely filled honey cells, 25; uniformity of color of honey (comb, cappings, honey), 25; thickness of comb for ease of uncapping, 10; completeness, uniformity and cleanliness of cappings, 25. TOTAL 100.
- 13 **One frame of empty extracting comb wrapped in clear plastic wrap**
 Score Card - Cleanliness of frame, 10; comb attachment and finish, 25; uniformity of cells, 25; uncapped finish, 30; color of wax, 10. TOTAL 100.

IOWA STATE FAIR * AUGUST 10-20, 2023 * APIARY

- 14 **Block of Beeswax - 3 pound minimum.** Bulk beeswax as prepared for the commercial market. (Wax that will be used for making candles, cosmetics, floor waxes and numerous other products.) Entry will be a plain block of wax without design or added color.
Score Card - No cracks, 20; color, 30; cleanliness, 20; aroma, 20; overall appearance, 10. TOTAL 100.
- 15 **Beeswax Art** - Entries are to showcase the natural beauty of beeswax. No added color will be allowed.
Score Card - Workmanship: No cracks or bubbles, wax color and cleanliness, 20; design, 20; originality, 20; difficulty, 20; aroma, 10; overall appearance, 10. TOTAL 100.
- 16 **Photograph - General Beekeeping** - (maximum size 8x10 inches, unframed, but matted with a maximum two inch border) Subject of photo must be honey or beekeeping and may depict harvesting, processing, marketing or packaging bee hive products.
Score Card - Technique, 30; composition, 30; impact, 30; overall appearance, 10. TOTAL 100.
- 17 **Photograph - Specific Subject** (maximum size 8x10 inches, unframed but matted with a maximum two inch border) Subject must be honeybees and must not have people in the photo. Please note: The specific subject for 2021 will be "Life Inside the Hive".
Score Card - Technique, 30; composition, 30; impact, 30; overall appearance, 10. TOTAL 100.
- 18 **Two Beeswax Candles (dipped)** any size - Entries are to showcase the natural beauty of beeswax. No added color will be allowed.
Score Card - Color (natural) 20; uniformity of appearance, 20; cleanliness, 20; workmanship, 20; odor, 20. TOTAL 100.
- 19 **Two Beeswax Candles, all others** (e.g. molded, various shapes, rolled, etc.) - Entries are to showcase the natural beauty of beeswax. No added color will be allowed.
Score Card - Color (natural or artificial), 20; uniformity of appearance, 20; cleanliness, 20; workmanship, 20; odor, 20. TOTAL 100.
- 20 **Gift Basket, maximum size 12 inches x 20 inches** - A basket full of honey and other beehive products and beekeeping-related items attractively displayed. Items that are not honey or beeswax do not have to be a product of the exhibitor. Honey and beeswax must be from the exhibitor's apiary but may have one (1) item of honey (example: honey sticks, bundles of five or less) from another source and must be identified as such with the name of the Apiary or source it is from. Failure to do so will disqualify the entry.
Score Card - Quality of products, 20; packaging of products, 20; originality and creativity, 20; variety and sales appeal, 30; overall appearance, 10. TOTAL 100.
- 21 **Limited Class - Entry Fee \$4**
Window Display (four feet wide by four feet high by two feet deep) depicting most attractive way to promote honey, wax and beekeeping. Materials used in this display may not be used in any other class. Two shelving tracts (**total of three shelves**) and fluorescent lighting provided on inside of window display box with a locked, glass front. Entry must be prepared and placed by the exhibitor. The exhibitor must do the majority of the work on the window but may have some help with the display. Each window must contain a minimum of 21 items. Honey and beeswax must be from the exhibitor's apiary but may have up to three (3) honey or beeswax items from another source. Each must be identified with the name of the Apiary or source it is from. Failure to do so will disqualify the entry. Limited to first four entries. Contact Superintendent for more details.
Score Card - Originality and suitability, 25; educational aspects, 20; variety and sales appeal, 20; economic importance of bees (value of products and pollination services), 25; lighting, 10. TOTAL 100.
- 22 **The Best Honey in Iowa!** - Submit one small (2 oz - 8oz) jar of your best liquid honey extracted as part of this year's crop. The jar must be "blacked out" to hide the appearance, color and clarity of the honey. This may be done with black paint or black tape applied to the outside of the jar. The jar may bear no individual labeling in order to maintain the exhibitor's anonymity. **Only 1st Place Blue Ribbon will be awarded.**
Score Card - Taste; The Best Honey as perceived by our Iowa State Fair Apiary Judge: 100 pts. TOTAL: 100.

YOUTH CLASSES - Open to ages 18 and under

Premiums in Classes 23 through 28 - \$10, 8, 5

CLASS

- 23 **Youth - Three 1 lb. Queenline or Classic Jars of extracted honey**
Score Card - Container: free of defects, 5; color of honey, 20; moisture content, 20; uniform volume of honey in all containers, 20; clarity of honey, 15; freedom from impurities including foam and granulation, 20. TOTAL 100.
- 24 **Youth - Beekeeping Photo** (maximum size 8x10 inches, unframed but matted with a maximum two inch border) Subject of photo must be honeybees, honey or beekeeping related.
Score Card - Technique, 30; composition, 30; impact, 30; overall appearance, 10. TOTAL 100.
- 25 **Youth - Two Beeswax Candles**
Score Card - Color (natural or artificial), 20; uniformity of appearance, 20; cleanliness, 20; workmanship, 20; odor, 20. TOTAL 100.
- 26 **Youth - Three 12 oz. Plastic Bears**
Score Card - Container: free from defects, 5; flavor: free from burnt taste, chemical contaminants or other off flavors, 10; color of honey, 20; moisture content, 20; uniform volume of honey in all containers, 15; clarity of honey, 15; freedom from impurities including foam and granulation, 15. TOTAL 100.
- 27 **Youth - One Frame of Honey, sealed, ready for extracting, wrapped in clear plastic wrap**
Score Card - Cleanliness of frame, 5; completeness of comb attachment, 10; uniform and completely filled honey cells, 25; uniformity of color of honey (comb, cappings, honey), 25; thickness of comb for ease of uncapping, 10; completeness, uniformity and cleanliness of cappings, 25. TOTAL 100.
- 28 **Youth - One frame of empty extracting comb wrapped in clear plastic wrap**
Score Card - Cleanliness of frame, 10; comb attachment and finish, 25; uniformity of cells, 25; uncapped finish, 30; color of wax, 10. TOTAL 100.

Tales from a Migratory Beekeeper



Written by Tyler Holton

A collection of information from those with direct, personal knowledge about beekeeping

It's May 24th.

Since the last article about leaving California for Iowa, I took a little detour. The bees and I headed to Mississippi.

The reason for the detour was to visit some friends and split the bees during a honeyflow. I wanted to make a large expansion this year and not having to stop splitting to feed them is a huge plus. Privet hedge is a bush that grows everywhere in the area along the tree lines. It's long branches will have beautiful white blossoms along it. The bees build up very well on it.

The weather there is exceptional to make splits with queen cells. I purchased cells from my friends who have a large assortment of breeder queens chosen and tested from within the operation and purchased instrumentally inseminated breeders as well.

I headed home about May 1st, leaving the bees behind for another 2 weeks for the queens to mate.

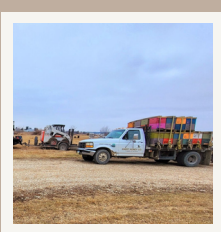
Now that they are home it's been a mad rush to keep up with them. They need to be checked for a laying queen and second boxes added quickly! They are gathering lots of nectar and getting plugged up!

Now my migration season is over. I'm happy to be home. A quick glance at the odometer of my truck says I've driven over 15,000 miles since leaving for California in January. And Gus has slept in the truck for nearly every one of them!

Stay Sweet
Tyler Holton



From the Beeyard



Written by Phil Ebert

A collection of information from those with direct, personal knowledge about beekeeping

It is May 1—time for May flowers. Dandelions are out in force. I have three lonely tulips blooming in my front yard but the hyacinths still have not bloomed. Pears are blooming. Apples will follow soon. I have not seen much deadnettle this year. That is a low growing plant with a purple trumpet shaped flower and small serrated leaves. It quite often covers fallow fields. I have seen a lot of it when driving thru Oklahoma and Kansas in the spring. Wild mustard will come on soon. We need some decent flying days for the bees to take advantage of this.

From what I am hearing and based on the number of bees that we are selling, there are a lot of dead colonies out there. If your bees have died consistently, don't keep doing things the same way and expect a different result. The issues confronting bees are complex but the things we can do as beekeepers are simple. #1—KILL MITES EARLY IN THE SEASON. #2—Feed and give protein supplement in the spring if needed. #3—control the population in the late spring to prevent swarming. Stanley's had a system for this. As I recall, they didn't want more than 4 frames of brood at the end of April. They took the rest away and made splits. We got away from that system several years ago. Big colonies recover faster than small ones. Now, we take 3 or 4 frames of brood and leave the rest. If they recover too quickly, we take more brood when we super. We have brood boxes on the truck for this. There are other ways to control swarming. Decide what system you will use. #4—Add supers. It is best to do this before your colonies are at peak strength—usually late May or early June. Splits may be later. This will vary by area. #5—Pull honey. Usually August or early September. Timing will be determined by what your mite load is. You need to test for this.

#6—KILL MORE MITES #7—Winter prep. This is a subject in itself and not covered here.

We have gotten slightly more than half of our bees back from California. They are in decent shape in spite of being a month late and having had almost no flying days. I was afraid they would starve out. The mud was mighty deep in the almond orchards. The rest of our bees are in Washington state pollinating apples. Logic says they should come home in good shape but logic does not always prevail. Some years back, we used to pollinate three apple orchards in the Lynnville area. The bees from the first two orchards came home in great shape. We made lots of splits. The best bees had been taken to the third orchard. I just knew they were going to be great. When we finally got them, they were terrible. Queens had failed. Populations had dwindled in general. We got almost no splits from them.

Planting is running ahead of last year. This probably means there will not be an August flow from soybeans like had last year. For some unknown reason, farmers are planting beans first in my area. I don't know why this is. Historically, corn has gone in the ground first. As we look ahead, I am hoping for a hot, dry summer. Our best crops have come in drought years.

Here is hoping for a good honey crop!!





From the Honey House



*Written by: Andy the Bee Guy
(Andy Hemken)*

A collection of information from those with direct, personal knowledge about beekeeping

All in the Family

I started beekeeping many years ago, because I thought it would be a fun hobby for me, and a fun activity for my growing family. Years later, this turned into a commercial operation producing honey and beeswax candles for a variety of farm markets in southeast Wisconsin. My son Scott started beekeeping in his teens, took a break, and picked it up again over the last ten years. Along with his full-time job, Scott is now working to grow into our beekeeping operation. My grandson Josh has grown up around honeybees and farm markets all of his life. Josh was initiated at two years old; while watching me replace a frame of bees into a hive, he ran over and pulled himself up onto the open hive. Two stings on the chin, and I had a lot of explaining to do to my wife and daughter. This did not diminish his interest. While in our back yard one day, Josh had the opportunity to have a swarm. Uncle Scott and Josh worked the hive in our back yard, and produced a bucket of honey. The following year, Josh had another hive in our yard, and had fun with it. Now at age 11, Josh wanted two of his own hives in his own back yard. We now have three generations of beekeepers in the family, and are having a lot of fun.



Andy & Scott Hemken & Josh

Andy Hemken / andy@hemkenhoney.com



Josh and grandpa inspecting package bees, 2013

Beekeeping OOPS

Respectfully Submitted by Sheila Weldon

Several winters ago, my husband and I visited his mother who was wintering in a RV/Mobile park in Apache Junction, AZ. While I was walking in the park, a pest control company with honeybee images on their truck was driving through the neighborhood. This caught my attention for obvious reasons and I followed it to a nearby park home. The lady came out of her home and told the pest controller that the bees were under the shed. I began a conversation with the pest control guy and asked him if he was going to catch the swarm. He informed me that he had to kill it because they assume that swarms in the area are Africanized bees. The lady quickly came back out and told me to leave him alone because he needed to kill the bees. (Note: I don't believe this is the truck, but what beekeeper wouldn't wonder?)



When bees get into your veil, they usually go to the light. That's why you'll want to go into deep shade or a dark corner.

Here's a link to a brave mother who protected her kids from an aggressive swarm in Arizona.

bit.ly/beeswarmrescuecall

Arizona is home to a significant population of Africanized honeybees, sometimes referred to as "killer bees." This problem has not gone away and has probably escalated in Arizona as well as other states. I mention this because we've witnessed an increase in aggressiveness in honeybee populations even in Iowa. I'm a proponent of always wearing protective equipment in good condition. This is something that I learned the hard way. One day a few+ years ago, my husband and I were helping a beekeeper west of Newton. We approached his last hive and he said that this one's aggressive. The hive was opened and the bees roared out and began bouncing off our veils. I then

realized that they were in my veil. His large barn was just a few feet from the hive. I immediately entered the barn and found a dark corner. There were only a few bees around me by then and a few inside my veil. I quickly discovered that the elastic around the bottom of my jacket was shot and no longer protected me – another beekeeping OOPS. NOTE: Do you ever wonder why the veil is black screen?

When bees get into your veil, they usually go to the light. That's why you'll want to go into deep shade or a dark corner.

Volunteers Needed

Wednesday, August 9

Walk in the Iowa State Fair Parade! Wear either an IHPA t-shirt, or part of your beekeeping gear.

Near the Iowa State Capital in Des Moines.

More details to come.

Please contact **Julie Swett** if you'd like to be added to a list of volunteers at funcity@aol.com

10 frame observation hive. Frames included. \$25.00. Bondurant Tony Christensen (515) 240-4957.



Spring Valley Honey Farms

14405 Hull Ave.
Perry, Iowa 50220
Curt and Connie Bronnenberg
515-480-6076

www.springvalleyhoneyfarms.com

This year was a good year here at Spring Valley Honey Farms, the bees came out of the almond orchards in great shape, built up well and produced an excellent crop of low moisture honey. Mite counts were generally low, treatments were still applied, ample protein and syrup was fed. We have a good supply of bees coming out of the almond orchards in California, so we will be shaking all of our packages out of our own bees.

2-pound package bees \$109.00 + tax + \$7.00 cage deposit

3-pound package bee \$132.00 + tax + \$7.00 cage deposit

5 Frame Nucs with Carniolan, Italian or Saskatraz Queens \$180.00 + tax

(Saskatraz package bees and Nucs are \$5.00 extra)

Because we feel supplementing carbohydrates and protein is important, we offer a gallon of syrup and protein patty for \$7.00 with the purchase of package bees or nucs.

During package season we are very flexible and usually available but always best to call or text Connie at 515-480-6076 as we do not keep regular store hours. If you call or text me an order, we can get order ready and you can pick up at your convenience.

We offer a full line of beekeeping equipment which you can find list and prices of our equipment on our website.

Queens (Carniolan or Italian) \$37.00 Saskatraz \$42.00

Corn Syrup .55 a pound (your container)

Gallon syrup - \$9.00

500#s or more .50 a pound

Protein Patties \$3.00 each Case of 40 Protein Patties \$100.00

We also sell bulk honey in 5 gallon buckets to 55 gallon drums.

Complete Hive Kit – (no honey supers) \$210.00 (Wood Frames)

\$197.00(Plastic Frames) (Includes: 2 Deep Hive Bodies, 18 - frames, 2gallon feeder, standard bottom board, telescoping cover & inner cover) **Fully assembled and painted.**

Complete Hive Kit + Honey Supers - \$330.00 (Wood Frames) \$305.00 (Plastic Frames) (Includes 2 Deep Hive Bodies, 18 frames, 2 gallon feeder, standard bottom board, telescoping cover & inner cover, 2 - 6 5/8 boxes + 20 - 6 5/8 frames) **Fully assembled and painted.**



YOUR SOURCE FOR.

HONEY Containers & More!



HONEY BEARS
2 oz, 8 oz, 12 oz, 24 oz



CORKED MUTH JARS
8 oz, 16 oz



**HOURLASS
SQUEEZE GRIP**
8 oz, 16 oz, 24 oz, 32 oz

NOW OFFERING

- Rectangle Front Bears
- Corked Muth Jars
- Pint Glass Jars
- Classic Glass Jars
- Hourglass Squeeze Grip
- Jugs & 5-Gallon Buckets
- Honeycomb Cases
- Spout, Snap Cap & Flat Lids

...AND MORE!



**ABOUT OUR
CONTAINER LINE**

Ebert Honey offers competitive pricing on a full lineup of professional honey packaging supplies, featuring over 20 container and bottle styles. We welcome orders of any size!

We proudly offer high quality products paired with friendly, local customer service.



**ABOUT YOUR
CONTAINER ORDER**

Choose local pick up or convenient shipping. Our streamlined website makes ordering and shipping fast and easy!

Pick up is arranged ahead of time and is available at both of our locations. We ship via USPS, FedEx, or Speedee Delivery.

EBERTHONEY.COM

319.259.9377 info@eberthoney.com
f @eberthoney

**14,808 South 102nd Ave. East
Lynnville, Iowa 50153**

**1090 Highway 1 North
Mount Vernon, Iowa 52314**

The Buzz Newsletter

Iowa Honey Producers Association
c/o Editor, Kelsey Wigans
402 SE E Avenue
Gilmore City, IA 50541



*The Buzz is a monthly newsletter published by
the Iowa Honey Producers Association
which is an affiliate of the Iowa State
Horticultural Society*



Deadline for submissions to The Buzz is always the 10th of the month at 11:59 p.m. the month prior to when you would like to see information published.

If writing an article for The Buzz, submissions must be 800 words or less. Pictures are encouraged!

Deadline to submit information for the July Edition of The Buzz

Saturday, June 10th at 11:59 p.m.

*If you need assistance designing your advertisement,
information is due to Kelsey Wigans one week prior, on
Saturday, June 3rd at 11:59 p.m.*

Please submit materials to: ihpaeditor@gmail.com

