



The Buzz

Newsletter of the Iowa Honey Producers Association



February 2013

Package Bee Ads Pg. 2
Iowa Honey Princess Pg. 5
Featured Beekeeper of the Month Pg. 6-7
Beekeeping Courses Pg. 9





March 3rd IHPA Board Meeting, 3pm at DMACC/Ankeny
March 15th & 16th Dadant 150th Anniversary Celebration
June 15th IHPA Field Day; Clemons, IA
June 15th IHPA Board Meeting following the Field Day events
September 29th IHPA Board Meeting, 3pm at DMACC/Ankeny
October 31 IHPA Board Meeting, 7pm at Marshalltown prior to the Annual Meeting
November 1 & 2 IHPA Annual Meeting in Marshalltown, IA



FOR SALE: 2 or 3 pound packages of Italian bees with Queen. Picked up in Cedar Rapids or Aurora, Iowa in April. Bees from Hill-Ward Apiary in California. All orders must be received by February 28 and full payment due by April 1st.

Call Douglas Child 319-634-3682 2/13

FOR SALE: 2#, 3# and 4# packages. The 4# can come with one or two queens. Your choice of Italian or Carniolan queens. We are getting two loads in April. Prices available in late January. We can take orders prior to that if you put down a deposit.

Contact Phil ehoney37@netins.net
641-527-2639 or
Alex alex.ebert@eberthoney.com
641-821-9648

For Sale: Kelley stainless steel grocers tank including valve. 3 yrs. old. \$250.00 (Kelley new price is \$485 without valve.

Contact: Galen Eiben
222 W. Main St.
Shell Rock, IA 50670
(319) 885-6264

FOR SALE: Honey Styx
I sent 2 barrels of honey to Oregon to have put into styx, so these are Iowa honey. Good flavored light honey.

\$0.08 each in boxes of 2000 or \$160
\$0.10 each for 500-1999
\$0.12 each for less than 500

Curt Bronnenberg
1433 Hull Ave.
Perry, IA 50220
(515) 465-5939
CBronny823@aol.com

For Sale: Pre-orders for Russian Nucs, Russian Queens, and 3lb Carniolan packages for April. Nucs and Packages have to be picked up in Des Moines, Iowa.

Visit Russianbee.com to place your order.

FOR SALE: Package Bees
We will be shaking 2 & 3 pound packages from our bees here in Iowa stating the 1st week in April up until the last week in April.

Carniolin or Italian
2 pound with queen \$70.00
3 pound with queen \$80.00
Queenless package \$20.00 cheaper

I will supply 1 gallon corn syrup and 1 # protein patty for \$5.00 extra.

Call:
515-465-5939
Connie cell 515-480-6076
Pat Ennis cell 515-293-2601

FOR SALE: Approx 50 new unassembled commercial grade hive bodies--\$12.50 each or \$11.50 if you take them all. Also available--15 boxes of 9oz hex jars with lids for \$6 per case.

Contact: Phil at 641-527-2639 or
ehoney37@netins.net

Alex at 641-821-9648 or
alex.ebert@eberthoney.com

FOR SALE: Pamphlet on Successful Management available: Ten Pages \$12 including postage.

Contact: Glen L. Stanley
908 N. Highway 69
Huxley, Iowa 50124
TELE: (515) 597-2555

BASIC HIVE KIT - UNASSEMBLED

2 DEEP BROOD BOXES.....\$25.00
20 PLASTIC FRAMES.....\$38.00
1 INNER COVER.....\$ 6.00
1 COVER (W/METAL COVER)...\$22.50
1 SCREEN BOTTOM BOARD.....\$22.50
TOTAL \$114.00

**BASIC HONEY SUPER KIT
- UNASSEMBLED**

1 QUEEN EXCLUDER.....\$ 7.00
2 - 6 5/8 HONEY SUPERS
BOXES\$23.00
20 PLASTIC FRAMES (6 5/8).....\$35.00
TOTAL \$65.00

**TOTAL OF BOTH KITS
\$179.00**

(This price does not include shipping or postage) All equipment is new. Items can be picked-up, or shipped.

All items can be combined or ordered separately @ same price.

Please call for arrangements and for information.

Pat Ennis
515-293-2601 or
Flat_lander@lycos.com



The Buzz Newsletter Article Submissions

Please send submissions, classified ads, and photos to Alex` Ebert by email to **TheBuzz@ABuzzAboutBees.com** (also alex.ebert@eberthoney.com) or by mail to The Buzz, c/o Phil Ebert, 14808 S. 102nd Ave. E., Lynnville, IA 50153. **The deadline for submissions is the 10th of each month to be included in the following month's newsletter.** The Buzz is a monthly newsletter published by the Iowa Honey Producers Association which is an affiliate of the Iowa State Horticultural Society.

President's Message, February 2013

It is January already, time is just flying and the due date to write my article for the February Buzz is today!

In the next couple of weeks, we're getting ready to go to California to work the bees for the almond pollination, Curt plans we can get through 2800 hives in four days! We will evaluate, feed and give them a pollen patty. To get thru all these hives in four days we'll be working some long days. The bees left Iowa looking really good, so this should be easy this year. We drive out to California on Interstate 80, it's a little more than 1,900 miles, you can drive straight through in about 32 hours, we usually take 3 days to get out there and taking 2 days coming back, wanting to get home. I don't much like it in California, its way to fast paced for me and seems like everyone is in a big hurry all the time. Couple of years back, after the bees were done, we drove up to Yosemite State Park and could only go so far up because of the fresh snowfall unless you had chains, but it's very scenic up there, a nice drive.

HopGuard is coming up for recertification for use in Iowa. I received this from Gretchen Paluch, Ph.D. with the Pesticide Bureau Chief & Iowa Department of Agriculture and Land Stewardship. She and other are currently evaluating HopGuard's Iowa Section 18 registration and plan to move forward with EPA's streamlined recertification application. We'll receive notification once more information about HopGuard registration status becomes available. If you have any immediate questions about the Section 18 application process, please contact Gretchen Paluch, Pesticide Bureau @ Ph: (515) 281-8590

I personally haven't used this product and don't know much about it, so if you have used it, let me know what you think, did it work for you or not. I would like to know if you have any other questions on the product. Let me know and I'll try to get you an answer.

It's in the mid 30's today and hopefully

it will be the same around the first part of February when you read this, so take some time to walk out and look at your bees. Check their weight and feed them if needed, weather permitting. I try not to feed syrup in the winter because this gives the bees to much water or moisture, so I use a candy board in the cold winter months. Page 637 in the "*Hive and the Honey Bee*" has a recipe to make a candy board.

15 pounds of sugar
3 pounds glucose of white syrup
4 cups water
½ teaspoon cream of tarter

Dissolve the sugar in the water by stirring and boiling the mixture until the temperature of the syrup rises to 240 deg. Let syrup cool to 180 deg., then beat until thick. Pour the candy into molds lined with wax paper. Place candy above the cluster in the hive

Pollen is also good to add this time of year to stimulate your bees to grow. If you don't wish the bees to grow yet, don't use the pollen until later, but don't let the little girls starve, give them something to eat. Find a warm day and spend some time checking your bees. Now is also a good time to pick up a good beekeeping book to read or go thru your equipment and get ready for spring.
BEE HAPPY!
Pat

P.S. I like the idea of putting a trivia question at the end of each month's letter. Hope you can find or know the answer. Let me know if you like it. Answer is in this buzz!

Trivia: During the first two days after an egg hatches, nurse bees continuously supply the tiny larvae with far more food than can be consumed, so that the larvae appear to float in the milky-white food. During the third day a larva in a worker cell continues to receive food, but consumes it as fast as it is deposited by the nurse bees.

QUESTION: During the nine day time from the laying of the egg until the larva is enclosed in the capped cell, how many times' will that larvae have been

feed by the nurse bees?

Answers on page 9.



What is the date on the back of the issue of the Buzz?

Is it prior to 12/31/2013? If it is prior to 12/31/2013, it's time pay your annual dues. The membership dues increased this year to \$20 for the first person, and \$5 for each additional person living at the same address. One Buzz newsletter will be mailed to each address.

Please send your 2013 membership dues to:

Rhonda Heston
527235 187th Ave
Chariton IA 50049-8616

If you have any questions, please call 515-724-2124.

Still Looking for Quilters

So far I have heard from six quilters who are interested in making a quilt block for the Journey Quilt. I would like to have a few more, at least twelve. The more quilters we have, the less number of blocks each one will have to make. You don't have to be an experienced quilter to make a block. This is a great time to work on your sewing skills or roll up to the sewing machine for the first time. You will have plenty of help in you get stuck.

This will provide you an outlet to try out a new pattern or a plain 4 patch block. The variety blocks will showcase our members' talent and independent planning of each block. I look forward to seeing how the quilt turns out.

If you are interested in making a block, please contact Rhonda Heston at 515-724-2124 or r.heston@yahoo.com. We need to get started on this project so it can be completed in time for Farmer's Markets. April will be here before you know it.

The Beekeeper's Wife Calendar

According to the Beekeeper's Wife Calendar, the honey is extracted and the bees are fed and tucked in for the winter. Time for my beekeeper husband to finish those *summer* projects. Sound familiar?

First on the list was the fence to enclose the bee yard, keep out plant-eating deer and keep in our new puppy - we hope! Del got the last fence posts in just before the first snow. The grandsons helped with the fencing during their winter vacation. Great job for two city boys.

Before the fence was finished, the deer broke through the back corner - repair #1. Then tree branches loaded with heavy snow from the latest storm fell on a fence section - repair #2. Hope Del can keep up. We have six gates so now qualify as a gated community.

It's also time to regroup and do next year's market plan. New products. New venues. We are presenting a program on "Marketing Your Honey" at the March 8 meeting for the Back-To-Basics Beekeeping Club in Oskaloosa at 6:30. Everyone is welcome to attend all meetings.

Del is reading Huber's Observations on Bees translated by C.P. Dadant. I am planning a quilt block for the quilt being auctioned to benefit the Queen program. Thanks to Rhonda Heston for organizing this worthy project.

It was nice to see Phil Ebert when he brought back the bee vacuum. Del was under the kitchen sink trying to find a leak. Phil mumbled something about not knowing much about plumbing and went on his way.

A safe and healthy winter to all beekeeper's wives. Next month's article is titled "Home Invasion".

By Fern F. Nelson

THE BEEYARD REPORT

The New Year has rolled in. This is when I feel a year older. My actual birthday has little effect on me mentally. Being seventy bothers me a little bit. After a very mild fall and early winter, cold weather has arrived with a vengeance. It feels cold when I get out of the shower. I try to stay in the shower until I hear the furnace kick on. I dry off in a hurry and then stand on top of the heat outlet until I warm up. The floors are a lot warmer than they used to be. I don't have to put my feet in the oven very often.

We have been getting our new truck (used but new to us) ready to go. We didn't have room to get it inside so we

WEAVER'S *famous* QUEENS and *Package Bees*

★ Buckfast

★ All-American

The R Weaver Apiaries, Inc.
16495 CR 319, Navasota, TX 77868

Phone: 936-825-2333

Fax: 936-825-3642

Email: rweaver@tca.net www.rweaver.com

took it down to the local welding shop to get a number of items cut off the bed and the tool boxes mounted. There was a fuel tank mounted on the bed when we bought it. I was able to sell that for \$100. We put new tires on the back. All we have left to is to get some decals on the doors and have the DOT inspection done.

Alex got the back end of the steel building cleaned out. We can now get a vehicle inside. One of the pickups needs a brake job and the Swinger needs some work.

It's time to close the books. I can put off that kind of work for a long time. When that is behind us, we will think about building pallets and coming up with an operation plan for the upcoming year. That's all I have for this month. Next

month, I will report of the AHPA meeting.

Submitted by Phil Ebert

RED ROCK BEEKEEPERS OF KNOXVILLE EXPLORE GADGETS FOR SWARM HARVESTING

Attendance was a little bit down for the December meetings at both the Back To Basics (Oskaloosa) and Red Rock Beekeepers (Knoxville), due to the busy Christmas season.

The Red Rock Beekeepers of Knoxville met on December 11, 2012, at a Knoxville Hospital. Not so surprisingly, our

leader, Jerry Murphy, pulled items out of the closet. He is a doer, doing with thingamajigs he has around home in closets or picks out of the trash or garage sales, to make such things as accessories and equipment for capturing swarms. Literally, he opened the closet and out came two of his creative devices and more ideas for gadgets. Would you believe he found a use for a long-handled paint roller and also for a battery post-terminal cleaner-tool with male/female brushes. He hasn't put his

swarm catcher out for trial as it is seasonal. Should it not prove effective, splash some colored paints on it and it is a good piece of art. Otherwise he could get a patent!! What bee keeper doesn't like equipment and gadgets? Read my next article about my husband and gadgets - the part he plays and the part I play. Later I'll tell you more about some of our demonstrations by the Red Rockers.

Red Rock Beekeepers of Knoxville meets on the second Tuesday of every month at the meeting room next to the cafeteria in the Knoxville Hospital. Please come. We want to grow. If we grow we can move into the cafeteria! Maybe we can find some left-over snacks.

This week has been so fun and interesting, I just wanted to share with all of you. A thought for the day to all clubs:

Invite IHPA representatives and board members to your meetings.

Editor, Marilyn Jackson of Melrose

Iowa Honey Princess

Hello Iowa Honey Producers. I would like to first thank everyone who helped plan and attended the 100th annual meeting. Especially, Connie Bronnenberg and Steve and Rhonda Heston for supporting and sponsoring me. It was a wonderful experience to help celebrate a hundred years of hard work and dedication to our bees! I am so excited to be part of the future to carry on the bee keeping ways and traditions.

My name is Rachel Stika, and I am the 2013 Iowa Honey Princess. It is an honor to be given this title. Here is a little bit about myself: I live in Cresco, Iowa. My parents are Ron and Elaine Stika. I live on a farm outside of Cresco where we primarily raise beef cattle. We also have a dog, a horse, rabbits, chickens, an army of cats, one fish and of course my two bee hives. I have two older brothers, Cole and Josh and one younger sister, Karissa.

I am currently a junior at Crestwood High School. I am very active in my community. I am involved in 4-H, County Council, Howard County Horse Program, FFA, Key Club, Silver Cord, Food and Fitness, Choir, Community and School plays and musicals, Madrigal, Contest Speech, Girl Scouts, Gifted and Talented Program, National Honor Society, High Honor Roll, High School Volleyball and AAU Volleyball. I am also involved with my church and church activities.

I became interested in bee keeping last year. My neighbor and mentor, Sherill Ryan sparked my interest. Sherill, Thank you so very much! I couldn't have done it without you. I got my very first bee hive in the spring of 2012. From there my passion grew and I got a second one later in the summer. It was so exciting to extract my first ever honey harvest this fall. It was so much fun to see 2 pounds of bees grow in a strong hive and be able to produce 6

gallons of honey for me!

My goal as Iowa Honey Princess is to assist in helping Hannah, the 2013 Iowa Honey Queen, and the IHPA, in spreading the word about honey and about bees. I hope I will see you all very soon.

Rachel Stika
2013 Iowa Honey Princess

The Fun Side of Beekeeping!

It's February and so far it's been a good winter, not too cold or too much snow, but I know we need the moisture.

My wife and I took a trip in December to the Back to Basics Beekeeping Club and I tell you what, they know how to have an informative and fun meeting. Five people talked about beekeeping, had a video, gave away door prizes and had treats with around 30 people there. Ben VanWyk (a youth beekeeper) gave a video presentation on collecting bee venom; it was all done with clips from the computer and was really cool. In this video they set up a little box that somehow made the bees sting it, than, more and more bees kept stinging it. Then the video showed how to collect the venom and what the venom is used for. Thank you Ben! You did a great job!

This month's readings lead me to the varroa mite, not really the fun side of beekeeping, but it's good to know your enemies! If you keep them under control whether it is natural or chemical use, your bees do better. I prefer the natural way whether that means screen bottom boards, powder sugar, or keeping bees that don't tolerate mites like the Russians or Minnesota Hygienics. Use whatever methods works for you so you can use as few or maybe even no chemicals, better for both the bees and the beekeeper.

Doing my research on mites, I found this video called: "*The Life Cycle of The Honey Bee and Varroa Mite*", narrated by **Jeff Harris** with the **USDA - ARS Lab**. The web site is: vimeo.com/19930552

I haven't seen this video on mites before and I learned a lot. The mother mite will

lay her first egg on day 10 of a honeybee's life-cycle, and will lay an egg every 30 hours! Her first egg is a male and he will hatch on day 12 of the honey bee life cycle. Thereafter the mother mite will lay all female mites. The male mite will mate with his sister mites as they mature. Maturing time is 7-8 day for the female and 5-6 days for the male mite.



Well, whatever you like to do, research on it, make yourself a better beekeeper. Know your enemy.

Hope to see you at a bee meeting, meanwhile, springs coming, "bee optimistic", this will "bee" the year for, you fill it in the blank. Make a plan and "bee prepared.

Beekeeping's fun side!



Submitted by Pat Ennis



State Apiarist

Hi all.

Just a quick note from me this month. I'm writing from the Hershey, PA bee meeting. So far, it's been a pretty great experience again this year. For any of you who are interested, I'll be sure to get some notes from the presentations posted to the IHPA webpage again this year.

It's been a busy month, which is a good thing. We're working toward getting Hopguard renewed for Iowa. Some of you have stressed the importance of having access to this mite control in early spring. Robin Praisner and I have met with the Pesticide Bureau and have provided summaries and letters to be included to the

packet which should be sent promptly to the EPA. Phil Ebert and Pat Ennis have written great letters of support, representing Iowa industry and the IHPA. If past years are any indicator, the EPA should just stamp the request "approved" for IA, and we'll have access to Hopguard through 2013. Last time, their approval only took about 10 days – 2 weeks. Hopguard is not my favorite mite treatment, but it fills specific niches – it's not temperature sensitive so it can be used early in the season, it seems to be pretty harmless to the bees and particularly queens, and it seems to be a decent option for those who choose not to use synthetic "chemical" miticides. The downside is that it doesn't seem to work that well. It kills mites outside cappings, but doesn't touch the mites which are in brood cells. Much like powdered sugar, it can give an impressive "knock down" (lots of mites drop to a sticky board over a couple days' time), but to really effectively reduce your mite numbers, multiple applications are probably required – three applications, each about a week or so apart ... this isn't clearly spelled out on the label. If you choose to use Hopguard for any of its positive qualities listed above, just be sure to follow up with a mite check to ensure it worked well for you. ...probably a good habit to be in regardless of your treatment strategies.

Hopefully, many of you have been investigating Apivar, and possibly considering it as an upcoming mite treatment option. Apivar will provide an EPA-registered Amitraz product. This is a chemical active ingredient we know works very well for controlling Varroa. Unfortunately, like Hopguard, Apivar is being permitted on a state-by-state level under EPA "Section 18" emergency allowance, rather than the more solid / legitimate / full Section 3 registration. About ½ the county has received registration. To my knowledge, IA hasn't yet begun assembling the packet to submit to the EPA so we can have access to Apivar in our state. We have had a meeting with the IDALS Pesticide Bureau, but it seems there's some level of hesitation or reluctance. If this product is

something which IA beekeepers want (I believe we need it), I would really encourage you to email the IDALS Pesticide Bureau with your request of Apivar product registration. You can send the emails to Dr. Gretchen Paluch, Pesticide Bureau Chief at: Gretchen.Paluch@IowaAgriculture.gov, or email me and I'll forward your requests to her. I'm not trying to "rally the troops", I'm just saying if you want Apivar in Iowa, you need to make your voice heard.

We're just getting started here in Hershey, but the striking reality is how completely frustrated beekeepers are regarding pesticide exposure. It appears to be a major focus of the ABF meeting. There have been entire symposium sessions focusing on what we're experiencing, the importance of "incident" (bee kill) reporting, and the like. The subject of dealing with bee kills has dominated the Apiary Inspectors of America discussions. Certainly, it's a big issue for us in Iowa, but this group extends from Canada to the tip of Florida.

One interesting presentation was given by Tom Steeger, with the EPA. He really stressed the importance of "incidence reporting" – reporting the bee kills and making certain they actually get recorded. Beekeepers tend not to report bee kills – this is for a number of reasons: fear of damaging relationships with growers or farming neighbors or our apiaries' land owners, fear of retribution, cynicism "won't do any good anyway", or fear we'll be caught using off-label substances in our hives... Long-story-short, it seems that our industry's level of frustration over pesticide damages isn't mirrored by the number of reports / claims which actually make their way to the EPA records. This is especially true for the neonicotinoids (think "Corn dust" at planting time). There has only been a relative handful of these reports which have reached the EPA. Simply put (as I understand it), the EPA won't take beekeepers' concerns seriously till the number of incident reports piles up deep enough that it becomes a priority for them to respond. So, bottom line, you are urged to report any suspected losses

related to pesticide exposure. Reporting should, ideally, be done through the IDALS Pesticide Bureau which "investigates" the incident on behalf of the EPA. Mr. Steeger has also set up a "bee kill hotline" email: beekill@epa.gov, BUT, he said that incident claims reported through this email will not be investigated – you'll become a "data point" but nothing more. The only route to an "investigation" is reporting through the state pesticide bureau. It's all just something to keep in mind as we bring our bees into next spring.

Did I say this was going to be short?!

See you. Andy

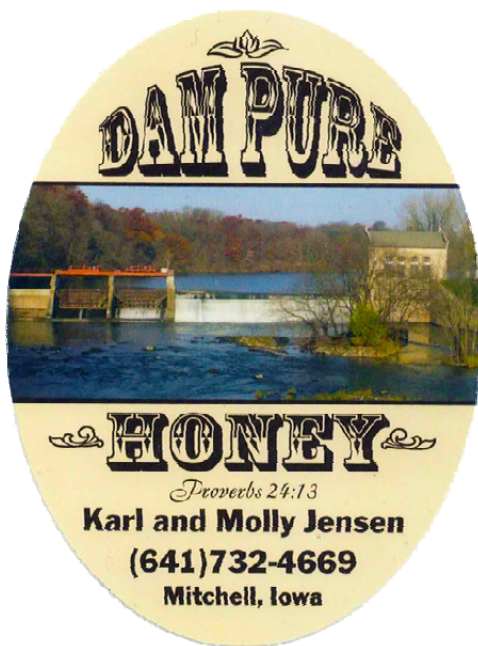
Featured Beekeeper of the Month

Our featured beekeepers of the month are Karl Jensen and his wife Molly. They live in Osage, Iowa, keep honeybees and run the Dam Pure Honey Company. If you are interested in a catalog I am including his email address. I think you'll enjoy his story.

Email: 2011jensen5050@gmail.com



**Karl and Molly Jansen of
Dam Pure Honey Co.**



The dam on the Big Cedar River gave inspiration for the Jensen's company name.

Our business is: "Dam Pure Honey Co". How we came up with this name is, we live about 1/4 mile from the Big Cedar River at Mitchell, IA. The river has a historic dam that, produces electricity and provides boating and camping and all sorts of recreational activities in the area. Therefore = Dam + Pure Honey Co. We started in February of 2009 by taking the Beginners Beekeeping Course at NIACC in Mason City. Pat and Peggy Ennis were and still are the instructors of this 4 week course. In April Pat set us up with 2 nucs and all the information to make one's head spin. In midsummer 1 hive swarmed and the other hive died. The hive that swarmed wintered over to our surprise. Winter 2010 we took the same course with the same instructors. Now all that information meant something to us, "It was one of those AH-HA moments!"

To date we have 19 hives going into winter, in the spring we'll be making nucs when possible to add to our bee yard. Last Spring I helped mentor a friend that is starting to raise bees, my friend wants to raise bees by the book and I like trial and error. It all turned out with a log of laughs and good times and a few stings!

We like to experiment with different ideas that we see, read or hear about.

We use screen bottom boards left open year around to help control moisture. In the winter we block out all of the drafts. This year we tested "Top Entrance Tops" on 6 hives with some good results. One of the biggest results was weight of the hive for wintering over. For spring feeding we use several different essential oils and Herbal Bee Hydrosol added to the sugar water for the spring build up. For fall feeding we use a Bee Tea added to the sugar water that helps with the mites and cleans out the bee's digestive system. We purchase some of these products from Weedsn-Bees.com. We also powder sugar in the spring and fall and anytime mites are present during inspections. "Note: We don't claim to be scientist or a well known researcher, what we do in our operation works for us and might not work for your operation."

We raised bees in a hollow log purely for our own enjoyment. I built a Warre Hive with tremendous results, until a rain/wind storm blew it over and smashed it to pieces, that was the end of that. In Mitchell Co. there are several beekeepers plus a few retired beekeepers. We all keep tabs on each other and when help or advice is needed we all pitch in.

Before beekeeping there was just the usual 4 seasons, now we are more in tune with what nature has to offer. We've noticed the color of pollen being brought to the hive, when the nectar flow starts and where it is coming from, the daily weather and how it will affect the routine of the hive.

We sell our honey products the usual way, the internet is another very important selling tool for our business. We are members of the IHPA, we attend as many of the field days and meetings as possible. We've found that at Pat and Peggy's "New Bee Field Day" there is a buzz of excitement from all the beginners just waiting to test their ability to be a beekeeper. While attending the IHPA field day there's all the good food, a wealth of knowledge, valuable information and a conversation worth its weight in golden honey with anyone wanting to talk bees. When you have 10 beekeepers in one room you will get 10 different opinions and 10 different answers and nobody is wrong! We all need to remember, we are working with one of nature's oldest living societies. Respect it and it will respect you!

Submitted by Ron Wehr



Karl checking out their first honeybee swarm.



Iowa Honey Producers Association 100th Anniversary Merchandise

Iowa Honey Producers Association 100th Anniversary merchandise is still available for sale. The prices listed below include shipping and handling. Please include quantities of each item, size of any shirts and contact information along with your payment.

National Honey Board Cooking with Honey Magnet	\$ 2.00
IHPA Cookbook: Iowa Honey Recipes	\$ 6.50
IHPA 100 th Anniversary Honey Pot	\$22.00
IHPA 100 th Anniversary Utensil Crock	\$36.00
IHPA 100 th Anniversary Coffee Cup with Spoon	\$17.00
IHPA 100 th Anniversary Engraved Hive Tool	
"Pollinating Iowa for 100 Years 1912-2012"	\$20.00
IHPA 100 th Anniversary Visor	\$15.00
IHPA 100 th Anniversary Hat	\$15.00
IHPA T-Shirt Youth: Small, Medium Large	\$15.00
IHPT T-Shirt Adult: Small, Medium, Large, X-Large	\$15.00
IHPA T-Shirt Adult: 2XL, 3XL	\$17.00
IHPA 100 th Anniversary Polo Shirt	
Adult: Small, Medium, Large, X-Large	\$35.00
IHPA 100 th Anniversary Polo Shirt	
Adult: 2XL, 3XL	\$37.00

Please send your order with payment to: Rhonda Heston
52735 187th Ave
Chariton IA 50049-8616
Telephone: 515-724-2124

We Want to Hear What You Have to Say,

A number of board members gathered recently to discuss on how to get "The Buzz" out in a timely manner. We know this is a concern for many of our membership. Please be patient as we try to resolve this issue.

One of the items of concern was the lack of articles and information submitted, and as the due date approached, with not enough information present, leaving Alex to fill the empty space.

So in light of this, we are asking for articles about beekeeping from our beekeeping membership to submit to "The Buzz".

Everyone has a story about beekeeping; how did you get started, a humorous

happening, a learning experience, some beekeeping wisdom, a story from a youth, your experience as a mentor, an event you attended. A picture you wish to share, or a favorite honey recipe. Your article needn't be a page long, unless you wish, but a paragraph or two would be great. So please help us out and share your stories by submitting your beekeeping articles.

***** Please note the due date for articles is now the 10th of each month and not the 15th.**

Please send them to:
thebuzz@abuzzaboutbees.com or
alex.ebert@eberthoney.com

We look forward to hearing to what you have to say.

Peggy Ennis, IHPA Historian 2/13

MARK YOUR CALANDER FOR THE ANNUAL AUCTION!

The Central Iowa Bee-keeper's Annual Auction
*will being held on April 20th
2013 at 10:00 a.m. on hwy
141, 1 block west of the
hospital in Perry, Iowa.*

Curt and Connie Bronnenberg have graciously offered us the use of their "in town honey house" again this year. There will be food, hot coffee, etc. available and restrooms.

WE ARE IN NEED OF CONSIGNERS AND BUYERS!!

Now is the perfect time to clean, sort, and sell your extra equipment, or come to buy good beekeeping equipment!

Please email me your list of items you would like to consign. Items consigned in time will be listed in "The Buzz".

If you would like to have a list of the consigned items, please email me after April 1st, and I will send you what I have.

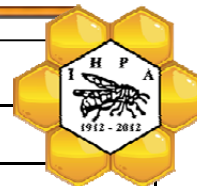
Consignment fee is 10% if consigned before March 9th, and 15% thereafter. All drawn comb will be inspected. There will be signs posted on Highway 141.

Pat Ennis
515-293-2601
Flat_lander@lycos.com

HOPE TO SEE YOU AT THE AUCTION!!



Beekeeping Courses to be Offered Across the State of Iowa



City	Start Date	Course Time	Meeting Location	Contact	Fee
Ankeny 6-8 pm	Jan. 22	Tuesdays for 6 weeks	Iowa Lab Facility, DMACC Campus	Andrew Joseph: 515-725-1481 or Andrew.Joseph@IowaAgriculture.gov 2230 s. Ankeny Blvd Ankeny, IA 50023	\$30
Cedar Rapids 7-9 pm	Jan. 17	8 sessions through out the year	Indian Creek Nature Center	Jean Wiedenheft: more information at www.indiancreeknaturecenter.org/basic-beekeeping/ 6665 Otis Rs SE Cedar Rapids, IA 52403	Member: \$55 Nonmember: \$85 Partner: \$10
Knoxville 6-8 pm	Jan. 15	Tuesdays for 7 weeks	Marion County Extension Office	Craig Greene: (641) 842-2112 210 N Iowa St Knoxville, IA 50138	\$30
Indianola 6-8 pm	Jan. 31	Thursdays for 6 - 8 weeks	Wyatt Honey House	Mike Wyatt: (515) 961-0357 Judy Spence: (515) 988-8397 5912 155 Ave Indianola, IA 50125	\$8.00
Glenwood	Feb. 23	Wednesdays for 4 weeks	IA Western Comm. College	Clarence Seale: 712-310-7410	TBD
Davenport	Feb. 6	Wednesdays for 6 weeks	Nahant Marsh Education Center 563-323-5196	Phil Crandall: (309)799-7420 or pcrandall@crandallfarms.com 4220 S Wapello Ave Davenport, IA 52802	\$85
Chariton 6-8 pm	Jan. 18	Fridays for 7 weeks	Lucas Co. Extension Office	Craig Greene: (641) 842-2112 48293 HyVee Rd Oskaloosa, IA 52577	\$30
Oskaloosa 6-8 pm	Jan. 17	Thursdays for 7 weeks	Mahaska County Extension office	Craig Green: 641-842-2112 212 North IsL Oskaloosa, IA	\$30
Marshalltown 7-9 pm	Jan. 16	Wednesdays: Beginning Beekeeping class for 4 weeks; Advanced Beekeeping next 3 weeks	Iowa Valley Community College	Sandy Supianoski: 800-284-4823 3702 South center St Marshalltown, IA Instructor: Phil Ebert	\$40 for both sessions \$25 - 30 for one session
Peosta 6-9 pm	Jan 24	1 day / week for 6 weeks	Northeast Iowa Community College	NICC Continuing Education: 563-557-0354 or www.nicc.edu and click on continuing education	\$30
Washington 6-8 pm	Feb. 4	Mondays for 4 weeks	Kirkwood Center	319-653-4655 111 West View Dr Washington, IA Instructor: Ron Wehr: 319-698-7542	\$49
Spencer 9 am-4 pm	Feb.16 Basic March 16 Advanced	Two Saturdays, one month apart	TBD	Larry or Marlene Boernsen: 712-735-4205	Single \$35 Family \$40
Mason City 9 am – 12 noon	Feb. 2	Saturdays for 4 weeks	North Iowa Area Community College	NIACC Continuing Education: 641-422-4358	\$39

Please note that not all of these courses are sponsored by the Iowa Honey Producers Association, and the information presented by the instructors is not necessarily endorsed by the IHPA. Additionally, none of the courses are sponsored by the Iowa Department of Agriculture & Land Stewardship and the information presented by the instructors is not necessarily endorsed by IDALS.

President's Message Trivia Answer: Do you know the bee's life cycle? It's an egg for 3 days, larva for 6 days = 9 days. Nurse bees feed the larva for 6 days at 1,300 times a day x 6 days equals 7,800 times!! Nurse bees don't feed eggs!! How did you do? Source "*The Hive and the Honey Bee*", pages 303-304

Central Iowa Bee Supply
Cash and carry bee equipment
supplier of woodenware, tools,
suits, medications, and nutritional
products from Dadant & Sons.
Custom woodenware built by our
own cabinetmaker, Don Charleston,
is also available.

**Owners: Susan Jones and
George Jones**

**Our shop is located at
14535 NE 88th St., Maxwell, IA.
Phone numbers 515-387-8707 and
515-450-8296, or online at our website
www.cibees.com Email us for your bee
supplies at cibees8707@gmail.com**

**Open: Thurs. 5-8 p.m.,
Saturday 10 a.m.-4 p.m., or call us.**

**We want to be your Central Iowa
bee equipment supplier for your hives and
all the supplies you need to get started in
the wonderful world of honey bees!**



**Come check out our shop 7 miles northeast of Elkhart,
or 5 miles southwest of Maxwell. When you need a Super
immediately for honey production - we are the ones to call.
When you need medication immediately - we are the ones to
come to. Cash and Carry. No more waiting on FEDEX
to show up in a week. You come and look at what you want
and walk out with it. No more shipping cost to worry about.
If we don't have it in stock, we will order it.**

For All Your Packaging Containers For Packing Honey

(No Order To Large or Small)

BL Plastic Containers, LLC



**"We Built Our Business on
Service, Quality, and
Dependability."**

**BL Plastic Containers, LLC
Unit 109
1425 Metro E. Drive
Pleasant Hill, IA 50327**

**Phone: 515-266-6112
Fax: 515-266-1112**

**sales@blplasticcont.com
www.blplasticcont.com**

LAPPS BEE SUPPLY CENTER

**500 SOUTH MAIN STREET
REESEVILLE, WISCONSIN 53579**

**Beekeeping & Candlemaking
Supplies**

**FREE CATALOG
1-800-321-1960**

**"Serving the beekeeper
for 25 years"**



Woodenware You Can Count On



6-5/8 PAINTED
SUPER

COMES ASSEMBLED WITH 10 - 6-1/4"
GROOVED TOP BAR FRAMES WITH
BEESWAX COATED PLASTICELL FOUNDATION
INSTALLED IN THE FRAMES.
COMMERCIAL GRADE WOOD, PAINTED.

C31501P CARTON OF 1 \$50.75 EA.
20 OR MORE \$47.25 EA.



9-5/8 PAINTED
HIVE BODY

COMES ASSEMBLED WITH 10 - 9-1/8"
GROOVED TOP BAR FRAMES WITH
BEESWAX COATED PLASTICELL FOUNDATION
INSTALLED IN THE FRAMES.
COMMERCIAL GRADE WOOD, PAINTED.

C51101P CARTON OF 1 \$57.50 EA.
20 OR MORE \$53.75 EA.

GET YOUR 2013 CATALOG



Assembled Frames

UNLIKE SOME,
OUR ASSEMBLED FRAMES
CONTINUE TO FEATURE A
FULL 1/2" THICK BOTTOM BAR
ALONG WITH A
FULL 3/4" THICK TOP BAR.

6-1/4" GTB/GBB
C76210 C/10 FRAMES
\$26.70 EA.

THE FRAMES
OTHERS
STRIVE TO
DUPLICATE

9-1/8" GTB/GBB
C75210 C/10 FRAMES
\$28.90 EA.

Glue & Side
Staple 3/4" Top Bar



Available
Unassembled and
Assembled as shown

1/2" Bottom Bar

1318 11th St.
Sioux City, IA 51102
877-732-3268 toll-free
712-255-3232 ph.
712-255-3233 fax

51 S. 2nd St.
Hamilton, IL 62341
888-922-1293 toll-free
217-847-3324 ph.
217-847-3660 fax



www.dadant.com



The Buzz Newsletter

Iowa Honey Producers Association
52735 187th Avenue
Chariton, IA 50049



Officers

President: Pat Ennis
1040 Union Ave.
Goodell, IA 50439
(641) 444-4767
Flat_Lander@lycos.com

Vice President: Eli Kalke
1445 165th St.
Clemons, IA 50051
(641) 512-4728
FieldStoneFarms@netins.net

Secretary: Mary Ebert
705 Hwy. #1 West
Iowa City, IA 52246
(319) 354-6696
MEbert@netins.net

Treasurer: Rhonda Heston
52735 187th Avenue
Chariton, IA 50049
(515) 724-2124
R.Heston@yahoo.com

Historian: Peggy Ennis
1040 Union Ave.
Goodell, IA 50439
(641) 444-4767

Past President :
Curt Bronnberg
1433 Hull Ave.
Perry, IA 50220
(515) 465-5939
CBronny823@aol.com

Judge Advocate: Larry J. Boernsen
6724 200th St.
Ocheyedan, Iowa 51354
(712) 735-4205
Lm5kbees@iowatelecom.net

District Directors

District #1 Jackie Beard
19682 415th St.
Chariton, IA 50049
(641) 774-8047
BeardRJ@wildblue.net

District #2 Louise Johnson
34147 310th St.
Guttenberg, IA 52052
(563) 252-2340
LouiseJ@alpinecom.net

District #3 Dennis Nielson
6948 25th Ave.
Newhall, IA 52315-9620
(319) 350-8361
nielsondl@fbx.com

District #4 Julie Swett
2005 North Dakota Ave
Ames, IA 50014
(515) 450-2033
funcity@aol.com

District #5 Craig Greene
1554 135th PL
Knoxville, IA 50138
(641) 842-2112

District #6 Mike Divis
3312 210th St.
Anthon, IA 51004
(712) 373-9743
(712) 899-8117
mikyyyyd@aol.com



Back-to-Basics Beekeeping Club

Contact: Eves Cadwallader
2420 285th St.
Oskaloosa, IA 52577
(641) 673-3993
weic@kdsi.net

Central Iowa Beekeepers Association

Contact: Arvin Foell
30930 530th Ave.
Kelley, IA 50134
Home phone 515/597-3060
Cell phone 515/450-9494
ajfoell@huxcomm.net

Des Moines Backyard Beekeepers

Contact: Julia McGuire
jcammcguire@yahoo.com

East Central Iowa Beekeepers

Contact: Dave Irvin
2254 S. Riverside Dr.
Iowa City, IA 52246
(319) 351-6205

State Apiarist

Andrew Joseph
(515) 725-1481
andrew.joseph@iowaagriculture.gov

IDALS website

www.agriculture.state.ia.us

Iowa Department of Inspections and Appeals

Mark Speltz
(515) 669-3266
mark.speltz@dia.iowa.gov

Iowa Honey Queen Program

Connie Bronnberg 515-480-6076
cbronny823@aol.com

North Iowa Bee Club

Contact: Pat Ennis
1040 Union Ave.
Goodell, IA 50439
(641) 444-4767
Flat_Lander@lycos.com

Northeast Iowa Beekeepers

Contact: Louise Johnson
34147 310th St.
Guttenberg, IA 52052
(563) 252-2340
LouiseJ@alpinecom.net

Northwest Iowa Beekeepers

Contact: Larry J. Boernsen
6724 200th St.
Ocheyedan, Iowa 51354
(712) 735-4205
Lm5kbees@iowatelecom.net

Red Rock Beekeepers

1180 92nd Ave
Knoxville, IA 50138
(641) 218-4814

Bee Emergency Information

Contact: Vern Ramsey
22781 Route J16
Birmingham, IA 52535-8162
(319) 498-4355

Contact: Mike Divis
3312 210th St.
Anthon, IA 51004
(712) 373-9743
(712) 899-8117

American Honey Producers Association

www.ahpanet.com

Southeast Iowa Beekeepers

Contact: Vernie Ramsey
22781 Route J16
Birmingham, IA 52535
(319) 498-4355
Vdramsey@netins.net

Southwest Iowa Honey Producers

Contact: Mike & Donna Brahm
14922 535th Street
Griswold, IA 51535
(712) 778-4256

Friendly Beekeepers of Iowa

Contact: Judy Spence
12839 Carpenter Trail
Carlisle, IA 50047
(515) 988-8397
jespencejr44@gmail.com

American Beekeeping Federation

www.ABFnet.org

National Honey Board

www.honey.com

Amy Toth, Assistant Professor

Iowa State University
Ecology, Evolution,
and Organismal Biology
amytoth@iastate.edu
http://www.public.iastate.edu/~amytoth/
Toth_lab/Home.html